

**Product Name: Midkine Rabbit Monoclonal Antibody****Catalog #: AMRe87661**

For research use only.

**Summary**

<b>Description</b>	Recombinant rabbit monoclonal antibody
<b>Host</b>	Rabbit
<b>Application</b>	WB,IHC,ICC/IF,FC,IP
<b>Reactivity</b>	Human
<b>Conjugation</b>	Unconjugated
<b>Modification</b>	Unmodified
<b>Isotype</b>	IgG
<b>Clonality</b>	Monoclonal
<b>Form</b>	Liquid
<b>Concentration</b>	
<b>Storage</b>	Aliquot and store at -20°C (valid for 12 months). Avoid freeze/thaw cycles.
<b>Shipping</b>	Ice bags
<b>Buffer</b>	Supplied in 50mM Tris-Glycine(pH 7.4), 0.15M NaCl, 40% Glycerol, 0.01% sodium azide and 0.05% protective protein. Stable for 12 months from date of receipt.
<b>Purification</b>	Affinity Purification

**Application**

<b>Dilution Ratio</b>	WB 1:500-1:2000,IHC 1:50-1:100,ICC/IF 1:100-1:200,FC 1:100-1:200,IP 1:20-1:50
<b>Molecular Weight</b>	Calculated MW:16 kDa; Observed MW:16 kDa

**Antigen Information**

<b>Gene Name</b>	Midkine
<b>Alternative Names</b>	MK; ARAP; NEGF2
<b>Gene ID</b>	4192
<b>SwissProt ID</b>	P21741
<b>Immunogen</b>	A synthetic peptide of human Midkine

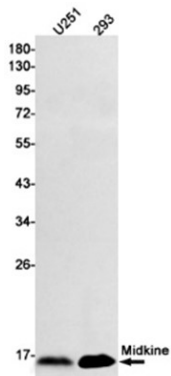
**Background**

This gene encodes a member of a small family of secreted growth factors that binds heparin and responds to retinoic acid. The encoded protein promotes cell growth, migration, and angiogenesis, in particular during tumorigenesis. This gene has been

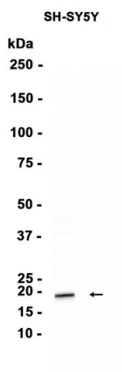
targeted as a therapeutic for a variety of different disorders. Alternatively spliced transcript variants encoding multiple isoforms have been observed. [provided by RefSeq, Jul 2012]

## Research Area

## Image Data



Western blot detection of Midkine in U251,293 cell lysates using Midkine antibody(1:1000 diluted).



Western blot analysis of extracts from SH-SY5Y cells using AMRe87661 at 1:1000.