

Product Name: RAPGEF5 Rabbit Monoclonal Antibody**Catalog #: AMRe87658**

For research use only.

Summary

Description	Recombinant rabbit monoclonal antibody
Host	Rabbit
Application	WB,IHC,ICC/IF,FC
Reactivity	Human,Mouse,Rat
Conjugation	Unconjugated
Modification	Unmodified
Isotype	IgG
Clonality	Monoclonal
Form	Liquid
Concentration	
Storage	Aliquot and store at -20°C (valid for 12 months). Avoid freeze/thaw cycles.
Shipping	Ice bags
Buffer	Supplied in 50mM Tris-Glycine(pH 7.4), 0.15M NaCl, 40% Glycerol, 0.01% sodium azide and 0.05% protective protein. Stable for 12 months from date of receipt.
Purification	Affinity Purification

Application

Dilution Ratio	WB 1:1000-1:5000,IHC 1:200-1:500,ICC/IF 1:100-1:200,FC 1:10-1:100
Molecular Weight	Calculated MW:68 kDa; Observed MW:68-75 kDa

Antigen Information

Gene Name	RAPGEF5
Alternative Names	GFR; REPAC; MR-GEF
Gene ID	9771, 217944, 362799
SwissProt ID	Q92565, Q8C0Q9, P83900
Immunogen	A synthetic peptide of human RAPGEF5

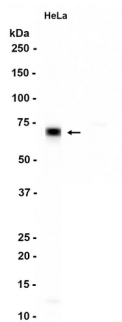
Background

Members of the RAS (see HRAS; MIM 190020) subfamily of GTPases function in signal transduction as GTP/GDP-regulated switches that cycle between inactive GDP- and active GTP-bound states. Guanine nucleotide exchange factors (GEFs), such as

RAPGEF5, serve as RAS activators by promoting acquisition of GTP to maintain the active GTP-bound state and are the key link between cell surface receptors and RAS activation (Rebhun et al., 2000 [PubMed 10934204]).[supplied by OMIM, Mar 2008]

Research Area

Image Data



Western blot analysis of extracts from HeLa cells using RAPGEF5 Rabbit Monoclonal Antibody at 1:1000.