

Product Name: Synapsin I Rabbit Monoclonal Antibody**Catalog #: AMRe87652**

For research use only.

Summary

Description	Recombinant rabbit monoclonal antibody
Host	Rabbit
Application	WB,IHC,ICC/IF,FC,IP
Reactivity	Human,Mouse,Rat
Conjugation	Unconjugated
Modification	Unmodified
Isotype	IgG
Clonality	Monoclonal
Form	Liquid
Concentration	
Storage	Aliquot and store at -20°C (valid for 12 months). Avoid freeze/thaw cycles.
Shipping	Ice bags
Buffer	Supplied in 50mM Tris-Glycine(pH 7.4), 0.15M NaCl, 40% Glycerol, 0.01% sodium azide and 0.05% protective protein. Stable for 12 months from date of receipt.
Purification	Affinity Purification

Application

Dilution Ratio	WB 1:500-1:2000,IHC 1:200-1:1000,ICC/IF 1:200-1:500,FC 1:20-1:50,IP 1:20-1:50
Molecular Weight	Calculated MW:74 kDa; Observed MW:77 kDa

Antigen Information

Gene Name	Synapsin I
Alternative Names	SYNI; SYN1a; SYN1b
Gene ID	6853, 20964, 24949
SwissProt ID	P17600, O88935, P09951
Immunogen	A synthetic peptide of human Synapsin I

Background

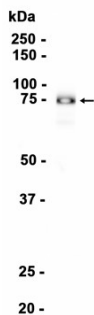
This gene is a member of the synapsin gene family. Synapsins encode neuronal phosphoproteins which associate with the cytoplasmic surface of synaptic vesicles. Family members are characterized by common protein domains, and they are

implicated in synaptogenesis and the modulation of neurotransmitter release, suggesting a potential role in several neuropsychiatric diseases. This member of the synapsin family plays a role in regulation of axonogenesis and synaptogenesis. The protein encoded serves as a substrate for several different protein kinases and phosphorylation may function in the regulation of this protein in the nerve terminal. Mutations in this gene may be associated with X-linked disorders with primary neuronal degeneration such as Rett syndrome. Alternatively spliced transcript variants encoding different isoforms have been identified. [provided by RefSeq, Jul 2008]

Research Area

Image Data

Mouse brain



Western blot analysis of extracts from Mouse brain tissue using Synapsin I Rabbit Monoclonal Antibody at 1:1000.

Rat brain



Western blot analysis of extracts from Rat brain tissue using AMRe87652 at 1:1000.