

**Product Name: TPD52 Rabbit Monoclonal Antibody****Catalog #: AMRe87647**

For research use only.

**Summary**

<b>Description</b>	Recombinant rabbit monoclonal antibody
<b>Host</b>	Rabbit
<b>Application</b>	WB,IHC,ICC/IF,FC
<b>Reactivity</b>	Human,Mouse
<b>Conjugation</b>	Unconjugated
<b>Modification</b>	Unmodified
<b>Isotype</b>	IgG
<b>Clonality</b>	Monoclonal
<b>Form</b>	Liquid
<b>Concentration</b>	
<b>Storage</b>	Aliquot and store at -20°C (valid for 12 months). Avoid freeze/thaw cycles.
<b>Shipping</b>	Ice bags
<b>Buffer</b>	Supplied in 50mM Tris-Glycine(pH 7.4), 0.15M NaCl, 40% Glycerol, 0.01% sodium azide and 0.05% protective protein. Stable for 12 months from date of receipt.
<b>Purification</b>	Affinity Purification

**Application**

<b>Dilution Ratio</b>	WB 1:1000-1:5000,IHC 1:50-1:100,ICC/IF 1:200-1:500,FC 1:20-1:50
<b>Molecular Weight</b>	Calculated MW:24 kDa; Observed MW:24 kDa

**Antigen Information**

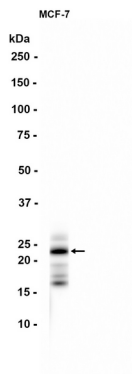
<b>Gene Name</b>	TPD52
<b>Alternative Names</b>	D52; N8L; PC-1; PrLZ; hD52
<b>Gene ID</b>	7163, 21985
<b>SwissProt ID</b>	P55327, Q62393
<b>Immunogen</b>	A synthetic peptide of human TPD52

**Background**

Enables calcium ion binding activity and protein homodimerization activity. Involved in B cell differentiation. Located in endoplasmic reticulum and perinuclear region of cytoplasm. [provided by Alliance of Genome Resources, Apr 2022]

## Research Area

## Image Data



Western blot analysis of extracts from MCF-7 cells using TPD52 Rabbit Monoclonal Antibody at 1:1000.