

Product Name: AF10 Rabbit Monoclonal Antibody**Catalog #: AMRe87637**

For research use only.

Summary

| | |
|----------------------|--|
| Description | Recombinant rabbit monoclonal antibody |
| Host | Rabbit |
| Application | WB,IHC,FC |
| Reactivity | Human,Mouse,Rat |
| Conjugation | Unconjugated |
| Modification | Unmodified |
| Isotype | IgG |
| Clonality | Monoclonal |
| Form | Liquid |
| Concentration | 0.5mg/ml. The concentration of this product may be batch-dependent. |
| Storage | Aliquot and store at -20°C (valid for 12 months). Avoid freeze/thaw cycles. |
| Shipping | Ice bags |
| Buffer | Supplied in 50mM Tris-Glycine(pH 7.4), 0.15M NaCl, 40% Glycerol, 0.01% sodium azide and 0.05% protective protein. Stable for 12 months from date of receipt. |
| Purification | Affinity Purification |

Application

| | |
|-------------------------|---|
| Dilution Ratio | WB 1:500-1:2000,IHC 1:200-1:1000,FC 1:200-1:500 |
| Molecular Weight | Calculated MW:113 kDa; Observed MW:140 kDa |

Antigen Information

| | |
|--------------------------|-----------------------------------|
| Gene Name | AF10 |
| Alternative Names | AF10 |
| Gene ID | 8028 |
| SwissProt ID | P55197 |
| Immunogen | Recombinant protein of human AF10 |

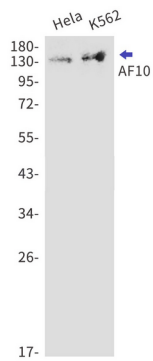
Background

This gene encodes a transcription factor and has been identified as a partner gene involved in several chromosomal rearrangements resulting in various leukemias. Multiple transcript variants encoding different isoforms have been found for

this gene. [provided by RefSeq, Sep 2010]

Research Area

Image Data



Western blot detection of AF10 in HeLa,K562 cell lysates using AF10 antibody(1:1000 diluted).