

---

**Product Name: VCAM1 Rabbit Monoclonal Antibody****Catalog #: AMRe87636**

For research use only.

**Summary**

<b>Description</b>	Recombinant rabbit monoclonal antibody
<b>Host</b>	Rabbit
<b>Application</b>	WB,IP
<b>Reactivity</b>	Mouse
<b>Conjugation</b>	Unconjugated
<b>Modification</b>	Unmodified
<b>Isotype</b>	IgG
<b>Clonality</b>	Monoclonal
<b>Form</b>	Liquid
<b>Concentration</b>	
<b>Storage</b>	Aliquot and store at -20°C (valid for 12 months). Avoid freeze/thaw cycles.
<b>Shipping</b>	Ice bags
<b>Buffer</b>	Supplied in 50mM Tris-Glycine(pH 7.4), 0.15M NaCl, 40% Glycerol, 0.01% sodium azide and 0.05% protective protein. Stable for 12 months from date of receipt.
<b>Purification</b>	Affinity Purification

**Application**

<b>Dilution Ratio</b>	WB 1:500-1:2000,IP 1:50-1:100
<b>Molecular Weight</b>	Calculated MW:81 kDa; Observed MW:100 kDa

**Antigen Information**

<b>Gene Name</b>	VCAM1
<b>Alternative Names</b>	CD106; Vcam-1
<b>Gene ID</b>	22329
<b>SwissProt ID</b>	P29533
<b>Immunogen</b>	Recombinant protein of mouse VCAM1

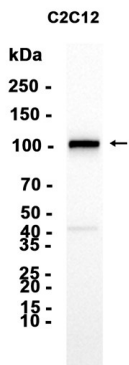
**Background**

Important in cell-cell recognition. Appears to function in leukocyte-endothelial cell adhesion. Interacts with integrin alpha-4/beta-1 (ITGA4/ITGB1) on leukocytes, and mediates both adhesion and signal transduction. The VCAM1/ITGA4/ITGB1

interaction may play a pathophysiologic role both in immune responses and in leukocyte emigration to sites of inflammation.

## Research Area

## Image Data



Western blot analysis of extracts from C2C12 cells using VCAM1 Rabbit Monoclonal Antibody at 1:1000.