
Product Name: FGL1 Rabbit Monoclonal Antibody**Catalog #: AMRe87635**

For research use only.

Summary

Description	Recombinant rabbit monoclonal antibody
Host	Rabbit
Application	WB,IHC,FC,IP
Reactivity	Human
Conjugation	Unconjugated
Modification	Unmodified
Isotype	IgG
Clonality	Monoclonal
Form	Liquid
Concentration	
Storage	Aliquot and store at -20°C (valid for 12 months). Avoid freeze/thaw cycles.
Shipping	Ice bags
Buffer	Supplied in 50mM Tris-Glycine(pH 7.4), 0.15M NaCl, 40% Glycerol, 0.01% sodium azide and 0.05% protective protein. Stable for 12 months from date of receipt.
Purification	Affinity Purification

Application

Dilution Ratio	WB 1:500-1:2000,IHC 1:200-1:500,FC 1:20-1:50,IP 1:20-1:50
Molecular Weight	Calculated MW:36 kDa; Observed MW:36 kDa

Antigen Information

Gene Name	FGL1
Alternative Names	HPS; HFREP1; HP-041; LFIRE1; LFIRE-1
Gene ID	2267
SwissProt ID	Q08830
Immunogen	Recombinant protein of human FGL1

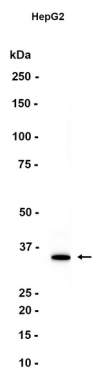
Background

Fibrinogen-like 1 is a member of the fibrinogen family. This protein is homologous to the carboxy terminus of the fibrinogen beta- and gamma- subunits which contains the four conserved cysteines of fibrinogens and fibrinogen related proteins.

However, this protein lacks the platelet-binding site, cross-linking region and a thrombin-sensitive site which are necessary for fibrin clot formation. This protein may play a role in the development of hepatocellular carcinomas. Four alternatively spliced transcript variants encoding the same protein exist for this gene. [provided by RefSeq, Jul 2008]

Research Area

Image Data



Western blot analysis of extracts from HepG2 cells using FGL1 Rabbit Monoclonal Antibody at 1:1000.