

---

**Product Name: Cyclin B2 Rabbit Monoclonal Antibody****Catalog #: AMRe87634**

For research use only.

**Summary**

<b>Description</b>	Recombinant rabbit monoclonal antibody
<b>Host</b>	Rabbit
<b>Application</b>	WB,IHC,ICC/IF,IP
<b>Reactivity</b>	Human,Mouse,Rat
<b>Conjugation</b>	Unconjugated
<b>Modification</b>	Unmodified
<b>Isotype</b>	IgG
<b>Clonality</b>	Monoclonal
<b>Form</b>	Liquid
<b>Concentration</b>	
<b>Storage</b>	Aliquot and store at -20°C (valid for 12 months). Avoid freeze/thaw cycles.
<b>Shipping</b>	Ice bags
<b>Buffer</b>	Supplied in 50mM Tris-Glycine(pH 7.4), 0.15M NaCl, 40% Glycerol, 0.01% sodium azide and 0.05% protective protein. Stable for 12 months from date of receipt.
<b>Purification</b>	Affinity Purification

**Application**

<b>Dilution Ratio</b>	WB 1:500-1:2000,IHC 1:50-1:200,ICC/IF 1:200-1:500,IP 1:50-1:100
<b>Molecular Weight</b>	Calculated MW:45 kDa; Observed MW:45 kDa

**Antigen Information**

<b>Gene Name</b>	Cyclin B2
<b>Alternative Names</b>	HsT17299
<b>Gene ID</b>	9133
<b>SwissProt ID</b>	O95067
<b>Immunogen</b>	Recombinant protein of human Cyclin B2/CCNB2

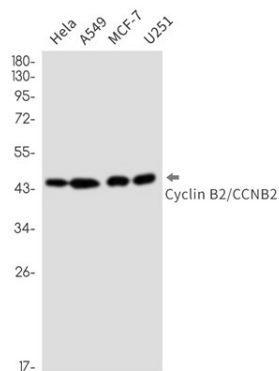
**Background**

Cyclin B2 is a member of the cyclin family, specifically the B-type cyclins. The B-type cyclins, B1 and B2, associate with p34cdc2 and are essential components of the cell cycle regulatory machinery. B1 and B2 differ in their subcellular localization. Cyclin B1

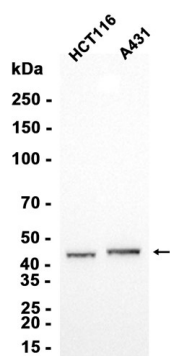
co-localizes with microtubules, whereas cyclin B2 is primarily associated with the Golgi region. Cyclin B2 also binds to transforming growth factor beta RII and thus cyclin B2/cdc2 may play a key role in transforming growth factor beta-mediated cell cycle control. [provided by RefSeq, Jul 2008]

## Research Area

## Image Data



Western blot detection of Cyclin B2/CCNB2 in HeLa,A549,MCF-7,U251 cell lysates using Cyclin B2/CCNB2 antibody(1:1000 diluted).



Western blot analysis of extracts from HCT116 , A431 cells using AMRe87634 at 1:1000.