

Product Name: Cytokeratin 6 Rabbit Monoclonal Antibody**Catalog #: AMRe87633**

For research use only.

Summary

Description	Recombinant rabbit monoclonal antibody
Host	Rabbit
Application	WB,IHC,ICC/IF
Reactivity	Human
Conjugation	Unconjugated
Modification	Unmodified
Isotype	IgG
Clonality	Monoclonal
Form	Liquid
Concentration	
Storage	Aliquot and store at -20°C (valid for 12 months). Avoid freeze/thaw cycles.
Shipping	Ice bags
Buffer	Supplied in 50mM Tris-Glycine(pH 7.4), 0.15M NaCl, 40% Glycerol, 0.01% sodium azide and 0.05% protective protein. Stable for 12 months from date of receipt.
Purification	Affinity Purification

Application

Dilution Ratio	WB 1:5000-1:50000,IHC 1:50-1:200,ICC/IF 1:100-1:200
Molecular Weight	Calculated MW:60 kDa; Observed MW:60 kDa

Antigen Information

Gene Name	Cytokeratin 6
Alternative Names	K6E; KRT6E; PPKNEFD
Gene ID	286887
SwissProt ID	P48668
Immunogen	A synthetic peptide of human Cytokeratin 6

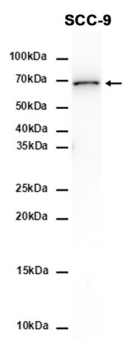
Background

Keratins are intermediate filament proteins responsible for the structural integrity of epithelial cells and are subdivided into epithelial keratins and hair keratins. The type II keratins are clustered in a region of chromosome 12q13. [provided by RefSeq,

Jul 2009]

Research Area

Image Data



Western blot analysis of extracts from SCC-9 cells using Cytokeratin 6 Rabbit Monoclonal Antibody at 1:2000.