
Product Name: YTHDF2 Rabbit Monoclonal Antibody**Catalog #: AMRe87625**

For research use only.

Summary

| | |
|----------------------|--|
| Description | Recombinant rabbit monoclonal antibody |
| Host | Rabbit |
| Application | WB,IP |
| Reactivity | Human,Mouse,Rat |
| Conjugation | Unconjugated |
| Modification | Unmodified |
| Isotype | IgG |
| Clonality | Monoclonal |
| Form | Liquid |
| Concentration | |
| Storage | Aliquot and store at -20°C (valid for 12 months). Avoid freeze/thaw cycles. |
| Shipping | Ice bags |
| Buffer | Supplied in 50mM Tris-Glycine(pH 7.4), 0.15M NaCl, 40% Glycerol, 0.01% sodium azide and 0.05% protective protein. Stable for 12 months from date of receipt. |
| Purification | Affinity Purification |

Application

| | |
|-------------------------|--|
| Dilution Ratio | WB 1:500-1:2000,IP 1:20-1:50 |
| Molecular Weight | Calculated MW:62 kDa; Observed MW:65 kDa |

Antigen Information

| | |
|--------------------------|-------------------------------------|
| Gene Name | YTHDF2 |
| Alternative Names | DF2; CAHL; HGRG8; NY-REN-2 |
| Gene ID | 51441 |
| SwissProt ID | Q9Y5A9 |
| Immunogen | A synthetic peptide of human YTHDF2 |

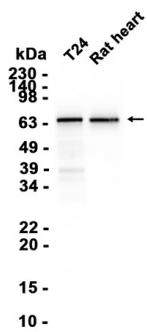
Background

This gene encodes a member of the YTH (YT521-B homology) superfamily containing YTH domain. The YTH domain is typical for the eukaryotes and is particularly abundant in plants. The YTH domain is usually located in the middle of the protein

sequence and may function in binding to RNA. In addition to a YTH domain, this protein has a proline rich region which may be involved in signal transduction. An Alu-rich domain has been identified in one of the introns of this gene, which is thought to be associated with human longevity. In addition, reciprocal translocations between this gene and the Runx1 (AML1) gene on chromosome 21 has been observed in patients with acute myeloid leukemia. This gene was initially mapped to chromosome 14, which was later turned out to be a pseudogene. Alternatively spliced transcript variants encoding different isoforms have been identified in this gene. [provided by RefSeq, Oct 2012]

Research Area

Image Data



Western blot analysis of extracts from T24 cells and Rat heart tissue using YTHDF2 Rabbit Monoclonal Antibody at 1:1000.