

Product Name: GRK2 Rabbit Monoclonal Antibody**Catalog #: AMRe87624**

For research use only.

Summary

Description	Recombinant rabbit monoclonal antibody
Host	Rabbit
Application	WB,IP
Reactivity	Human
Conjugation	Unconjugated
Modification	Unmodified
Isotype	IgG
Clonality	Monoclonal
Form	Liquid
Concentration	
Storage	Aliquot and store at -20°C (valid for 12 months). Avoid freeze/thaw cycles.
Shipping	Ice bags
Buffer	Supplied in 50mM Tris-Glycine(pH 7.4), 0.15M NaCl, 40% Glycerol, 0.01% sodium azide and 0.05% protective protein. Stable for 12 months from date of receipt.
Purification	Affinity Purification

Application

Dilution Ratio	WB 1:500-1:2000,IP 1:20-1:50
Molecular Weight	Calculated MW:80 kDa; Observed MW:80 kDa

Antigen Information

Gene Name	GRK2
Alternative Names	BARK1; ADRBK1; BETA-ARK1
Gene ID	156
SwissProt ID	P25098
Immunogen	A synthetic peptide of human GRK2

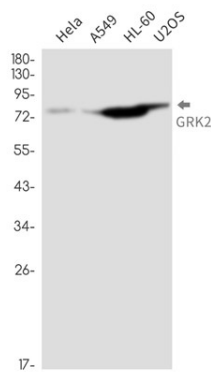
Background

This gene encodes a member of the G protein-coupled receptor kinase family of proteins. The encoded protein phosphorylates the beta-adrenergic receptor as well as a wide range of other substrates including non-GPCR cell surface receptors, and

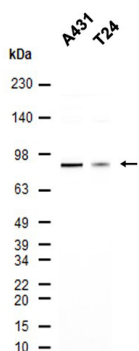
cytoskeletal, mitochondrial, and transcription factor proteins. Data from rodent models supports a role for this gene in embryonic development, heart function and metabolism. Elevated expression of this gene has been observed in human patients with heart failure and Alzheimer's disease. [provided by RefSeq, Sep 2017]

Research Area

Image Data



Western blot detection of GRK2 in HeLa, A549, HL-60, U2OS cell lysates using GRK2 antibody (1:1000 diluted).



Western blot analysis of extracts from A431, T24 cells using AMRe87624 at 1:1000.