
Product Name: YTHDC1 Rabbit Monoclonal Antibody**Catalog #: AMRe87623**

For research use only.

Summary

Description	Recombinant rabbit monoclonal antibody
Host	Rabbit
Application	WB,IHC
Reactivity	Human,Mouse,Rat
Conjugation	Unconjugated
Modification	Unmodified
Isotype	IgG
Clonality	Monoclonal
Form	Liquid
Concentration	
Storage	Aliquot and store at -20°C (valid for 12 months). Avoid freeze/thaw cycles.
Shipping	Ice bags
Buffer	Supplied in 50mM Tris-Glycine(pH 7.4), 0.15M NaCl, 40% Glycerol, 0.01% sodium azide and 0.05% protective protein. Stable for 12 months from date of receipt.
Purification	Affinity Purification

Application

Dilution Ratio	WB 1:500-1:2000,IHC 1:200-1:500
Molecular Weight	Calculated MW:85 kDa; Observed MW:110 kDa

Antigen Information

Gene Name	YTHDC1
Alternative Names	YT521; YT521-B
Gene ID	91746
SwissProt ID	Q96MU7
Immunogen	Recombinant protein of human YTHDC1

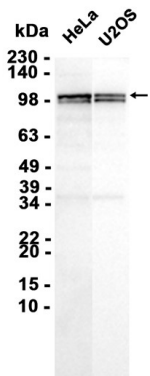
Background

Enables N6-methyladenosine-containing RNA binding activity. Involved in mRNA export from nucleus; mRNA splice site selection; and regulation of gene expression. Located in nuclear speck and plasma membrane. [provided by Alliance of Genome

Resources, Apr 2022]

Research Area

Image Data



Western blot analysis of extracts from HeLa , U2OS cells using YTHDC1 Rabbit Monoclonal Antibody at 1:1000.