

**Product Name: Sortilin Rabbit Monoclonal Antibody****Catalog #: AMRe87622**

For research use only.

**Summary**

<b>Description</b>	Recombinant rabbit monoclonal antibody
<b>Host</b>	Rabbit
<b>Application</b>	WB,IHC,ICC/IF,FC
<b>Reactivity</b>	Human,Mouse,Rat
<b>Conjugation</b>	Unconjugated
<b>Modification</b>	Unmodified
<b>Isotype</b>	IgG
<b>Clonality</b>	Monoclonal
<b>Form</b>	Liquid
<b>Concentration</b>	0.1mg/ml. The concentration of this product may be batch-dependent.
<b>Storage</b>	Aliquot and store at -20°C (valid for 12 months). Avoid freeze/thaw cycles.
<b>Shipping</b>	Ice bags
<b>Buffer</b>	Supplied in 50mM Tris-Glycine(pH 7.4), 0.15M NaCl, 40% Glycerol, 0.01% sodium azide and 0.05% protective protein. Stable for 12 months from date of receipt.
<b>Purification</b>	Affinity Purification

**Application**

<b>Dilution Ratio</b>	WB 1:500-1:2000,IHC 1:1000-1:5000,ICC/IF 1:100-1:200,FC 1:200-1:500
<b>Molecular Weight</b>	Calculated MW:92 kDa; Observed MW:92 kDa

**Antigen Information**

<b>Gene Name</b>	Sortilin
<b>Alternative Names</b>	NT3; Gp95; NTR3; LDLCQ6
<b>Gene ID</b>	6272
<b>SwissProt ID</b>	Q99523
<b>Immunogen</b>	Recombinant protein of human Sortilin/NT3

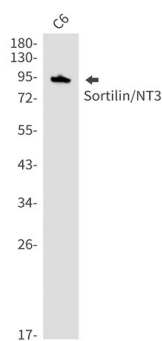
**Background**

This gene encodes a member of the VPS10-related sortilin family of proteins. The encoded preproprotein is proteolytically processed by furin to generate the mature receptor. This receptor plays a role in the trafficking of different proteins to either

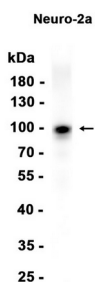
the cell surface, or subcellular compartments such as lysosomes and endosomes. Expression levels of this gene may influence the risk of myocardial infarction in human patients. Alternative splicing results in multiple transcript variants. [provided by RefSeq, Oct 2015]

## Research Area

## Image Data



Western blot detection of Sortilin/NT3 in HeLa, A549, MCF-7 cell lysates using Sortilin/NT3 antibody (1:1000 diluted).



Western blot analysis of extracts from Neuro-2a cells using AMRe87622 at 1:1000.