

---

**Product Name: CaMKII Rabbit Monoclonal Antibody****Catalog #: AMRe87614**

For research use only.

**Summary**

<b>Description</b>	Recombinant rabbit monoclonal antibody
<b>Host</b>	Rabbit
<b>Application</b>	WB,IHC,ICC/IF,FC
<b>Reactivity</b>	Human, Mouse, Rat
<b>Conjugation</b>	Unconjugated
<b>Modification</b>	Unmodified
<b>Isotype</b>	IgG
<b>Clonality</b>	Monoclonal
<b>Form</b>	Liquid
<b>Concentration</b>	
<b>Storage</b>	Aliquot and store at -20°C (valid for 12 months). Avoid freeze/thaw cycles.
<b>Shipping</b>	Ice bags
<b>Buffer</b>	Supplied in 50mM Tris-Glycine(pH 7.4), 0.15M NaCl, 40% Glycerol, 0.01% sodium azide and 0.05% protective protein. Stable for 12 months from date of receipt.
<b>Purification</b>	Affinity Purification

**Application**

<b>Dilution Ratio</b>	WB 1:1000-1:2000,IHC 1:200-1:500,ICC/IF 1:20-1:100,FC 1:20-1:100
<b>Molecular Weight</b>	Calculated MW:54 kDa; Observed MW:54 kDa

**Antigen Information**

<b>Gene Name</b>	CaMKII
<b>Alternative Names</b>	CAMKA
<b>Gene ID</b>	815
<b>SwissProt ID</b>	Q9UQM7
<b>Immunogen</b>	A synthetic peptide of human CaMKII

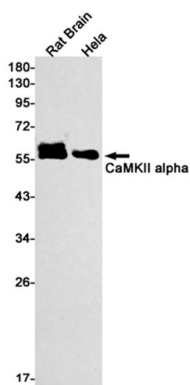
**Background**

The product of this gene belongs to the serine/threonine protein kinases family, and to the Ca(2+)/calmodulin-dependent protein kinases subfamily. Calcium signaling is crucial for several aspects of plasticity at glutamatergic synapses. This calcium

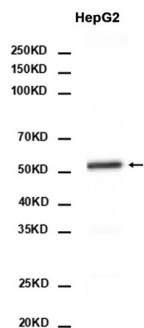
calmodulin-dependent protein kinase is composed of four different chains: alpha, beta, gamma, and delta. The alpha chain encoded by this gene is required for hippocampal long-term potentiation (LTP) and spatial learning. In addition to its calcium-calmodulin (CaM)-dependent activity, this protein can undergo autophosphorylation, resulting in CaM-independent activity. Two transcript variants encoding distinct isoforms have been identified for this gene. [provided by RefSeq, Nov 2008]

## Research Area

## Image Data



Western blot detection of CaMKII alpha in Rat Brain, HeLa cell lysates using CaMKII alpha antibody (1:1000 diluted).



Western blot analysis of extracts from HepG2 cells using AMRe87614 at 1:2000.