
Product Name: Acetyl-Histone H3 (Lys27) Rabbit Monoclonal Antibody**Catalog #: AMRe87610**

For research use only.

Summary

Description	Recombinant rabbit monoclonal antibody
Host	Rabbit
Application	WB,IHC,ICC/IF,FC
Reactivity	Human,Mouse,Rat
Conjugation	Unconjugated
Modification	Acetylated
Isotype	IgG
Clonality	Monoclonal
Form	Liquid
Concentration	0.5mg/ml. The concentration of this product may be batch-dependent.
Storage	Aliquot and store at -20°C (valid for 12 months). Avoid freeze/thaw cycles.
Shipping	Ice bags
Buffer	Supplied in 50mM Tris-Glycine(pH 7.4), 0.15M NaCl, 40% Glycerol, 0.01% sodium azide and 0.05% protective protein. Stable for 12 months from date of receipt.
Purification	Affinity Purification

Application

Dilution Ratio	WB 1:5000-1:50000,IHC 1:1000-1:10000,ICC/IF 1:500-1:5000,FC 1:200-1:1000
Molecular Weight	Calculated MW:15 kDa; Observed MW:17 kDa

Antigen Information

Gene Name	Acetyl-Histone H3
Alternative Names	H3/j; H3C1; H3C2; H3C3; H3C4; H3C6; H3C7; H3C8; H3FJ; H3C10; H3C11; HIST1H3J
Gene ID	8356
SwissProt ID	P68431
Immunogen	A synthetic acetyl-peptide corresponding to residues surrounding Lys27 of human Histone H3

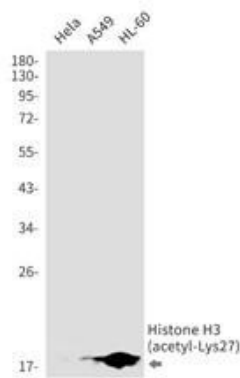
Background

Histones are basic nuclear proteins that are responsible for the nucleosome structure of the chromosomal fiber in eukaryotes.

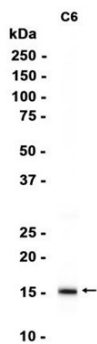
Two molecules of each of the four core histones (H2A, H2B, H3, and H4) form an octamer, around which approximately 146 bp of DNA is wrapped in repeating units, called nucleosomes. The linker histone, H1, interacts with linker DNA between nucleosomes and functions in the compaction of chromatin into higher order structures. This gene is intronless and encodes a replication-dependent histone that is a member of the histone H3 family. Transcripts from this gene lack polyA tails but instead contain a palindromic termination element. This gene is found in the small histone gene cluster on chromosome 6p22-p21.3. [provided by RefSeq, Aug 2015]

Research Area

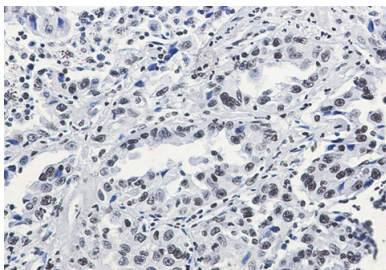
Image Data



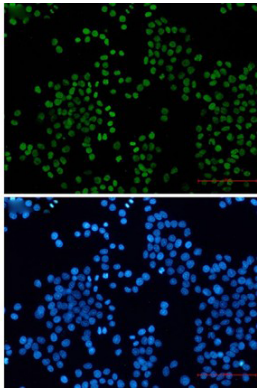
Western blot detection of Histone H3 (acetyl-Lys27) in HeLa, A549, HL-60 cell lysates using Histone H3 (acetyl-Lys27) antibody (1:1000 diluted).



Western blot analysis of extracts from C6 cells using AMRe87610 at 1:1000.



Immunohistochemical analysis of paraffin-embedded human lung cancer using AMRe87610 antibody.



Immunofluorescent analysis of HeLa cells using AMRe87610 antibody (green), and DAPI (blue).