
Product Name: SEC62 Rabbit Monoclonal Antibody**Catalog #: AMRe87606**

For research use only.

Summary

Description	Recombinant rabbit monoclonal antibody
Host	Rabbit
Application	WB,IHC,ICC/IF
Reactivity	Human,Mouse,Rat
Conjugation	Unconjugated
Modification	Unmodified
Isotype	IgG
Clonality	Monoclonal
Form	Liquid
Concentration	
Storage	Aliquot and store at -20°C (valid for 12 months). Avoid freeze/thaw cycles.
Shipping	Ice bags
Buffer	Supplied in 50mM Tris-Glycine(pH 7.4), 0.15M NaCl, 40% Glycerol, 0.01% sodium azide and 0.05% protective protein. Stable for 12 months from date of receipt.
Purification	Affinity Purification

Application

Dilution Ratio	WB 1:1000-1:5000,IHC 1:100-1:200,ICC/IF 1:200-1:500
Molecular Weight	Calculated MW:46 kDa; Observed MW:46 kDa

Antigen Information

Gene Name	SEC62
Alternative Names	HTP1; TP-1; Dtrp1; TLOC1
Gene ID	7095
SwissProt ID	Q99442
Immunogen	A synthetic peptide of human SEC62

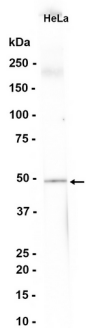
Background

The Sec61 complex is the central component of the protein translocation apparatus of the endoplasmic reticulum (ER) membrane. The protein encoded by this gene and SEC63 protein are found to be associated with ribosome-free SEC61

complex. It is speculated that Sec61-Sec62-Sec63 may perform post-translational protein translocation into the ER. The Sec61-Sec62-Sec63 complex might also perform the backward transport of ER proteins that are subject to the ubiquitin-proteasome-dependent degradation pathway. The encoded protein is an integral membrane protein located in the rough ER. [provided by RefSeq, Jul 2008]

Research Area

Image Data



Western blot analysis of extracts from HeLa cells using SEC62 Rabbit Monoclonal Antibody at 1:1000.