

Product Name: PPP2R5E Rabbit Monoclonal Antibody**Catalog #: AMRe87605**

For research use only.

Summary

| | |
|----------------------|--|
| Description | Recombinant rabbit monoclonal antibody |
| Host | Rabbit |
| Application | WB,IHC,ICC/IF,FC,IP |
| Reactivity | Human,Mouse,Rat |
| Conjugation | Unconjugated |
| Modification | Unmodified |
| Isotype | IgG |
| Clonality | Monoclonal |
| Form | Liquid |
| Concentration | |
| Storage | Aliquot and store at -20°C (valid for 12 months). Avoid freeze/thaw cycles. |
| Shipping | Ice bags |
| Buffer | Supplied in 50mM Tris-Glycine(pH 7.4), 0.15M NaCl, 40% Glycerol, 0.01% sodium azide and 0.05% protective protein. Stable for 12 months from date of receipt. |
| Purification | Affinity Purification |

Application

| | |
|-------------------------|---|
| Dilution Ratio | WB 1:1000-1:5000,IHC 1:200-1:500,ICC/IF 1:200-1:500,FC 1:200-1:1000,IP 1:50-1:100 |
| Molecular Weight | Calculated MW:55 kDa; Observed MW:55 kDa |

Antigen Information

| | |
|--------------------------|--------------------------------------|
| Gene Name | PPP2R5E |
| Alternative Names | B56E; B56epsilon |
| Gene ID | 5529 |
| SwissProt ID | Q16537 |
| Immunogen | A synthetic peptide of human PPP2R5E |

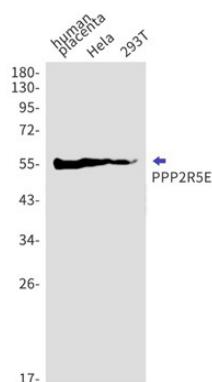
Background

The protein encoded by this gene belongs to the phosphatase 2A regulatory subunit B family. Protein phosphatase 2A is one of the four major Ser/Thr phosphatases, and it is implicated in the negative control of cell growth and division. It consists of a

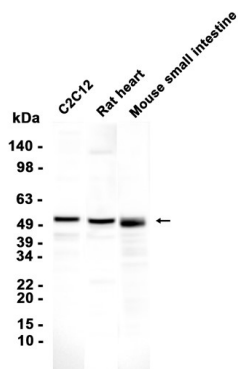
common heteromeric core enzyme, which is composed of a catalytic subunit and a constant regulatory subunit, that associates with a variety of regulatory subunits. The B regulatory subunit might modulate substrate selectivity and catalytic activity. This gene encodes an epsilon isoform of the regulatory subunit B56 subfamily. Multiple transcript variants encoding several different isoforms have been found for this gene. [provided by RefSeq, Aug 2013]

Research Area

Image Data



Western blot detection of PPP2R5E in human placenta, HeLa, 293T cell lysates using PPP2R5E antibody (1:1000 diluted).



Western blot analysis of extracts from C2C12 cells and Rat heart, Mouse small intestine tissue using AMRe87605 at 1:2000.