

Product Name: PPP2R5D Rabbit Monoclonal Antibody**Catalog #: AMRe87604**

For research use only.

Summary

Description	Recombinant rabbit monoclonal antibody
Host	Rabbit
Application	WB,IHC,ICC/IF,FC,IP
Reactivity	Human,Mouse,Rat
Conjugation	Unconjugated
Modification	Unmodified
Isotype	IgG
Clonality	Monoclonal
Form	Liquid
Concentration	
Storage	Aliquot and store at -20°C (valid for 12 months). Avoid freeze/thaw cycles.
Shipping	Ice bags
Buffer	Supplied in 50mM Tris-Glycine(pH 7.4), 0.15M NaCl, 40% Glycerol, 0.01% sodium azide and 0.05% protective protein. Stable for 12 months from date of receipt.
Purification	Affinity Purification

Application

Dilution Ratio	WB 1:2000-1:20000,IHC 1:50-1:100,ICC/IF 1:100-1:200,FC 1:20-1:50,IP 1:50-1:100
Molecular Weight	Calculated MW:70 kDa; Observed MW:70,66 kDa

Antigen Information

Gene Name	PPP2R5D
Alternative Names	B56D; MRD35; B56delta
Gene ID	5528
SwissProt ID	Q14738
Immunogen	Recombinant protein of human PPP2R5D

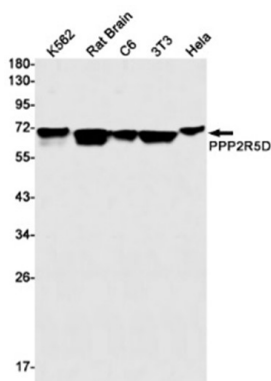
Background

The product of this gene belongs to the phosphatase 2A regulatory subunit B family. Protein phosphatase 2A is one of the four major Ser/Thr phosphatases, and it is implicated in the negative control of cell growth and division. It consists of a common

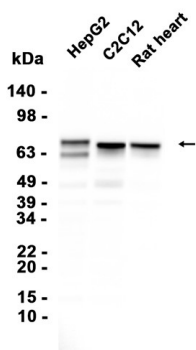
heteromeric core enzyme, which is composed of a catalytic subunit and a constant regulatory subunit, that associates with a variety of regulatory subunits. The B regulatory subunit might modulate substrate selectivity and catalytic activity. This gene encodes a delta isoform of the regulatory subunit B56 subfamily. Alternatively spliced transcript variants encoding different isoforms have been identified. [provided by RefSeq, Jul 2008]

Research Area

Image Data



Western blot detection of PPP2R5D in K562, Rat Brain, C6, 3T3, HeLa cell lysates using PPP2R5D antibody (1:1000 diluted).



Western blot analysis of extracts from HepG2, C2C12 cells and Rat heart, tissue using AMRe87604 at 1:5000.