

---

**Product Name: PARK7/DJ1 Rabbit Monoclonal Antibody****Catalog #: AMRe87595**

For research use only.

**Summary**

<b>Description</b>	Recombinant rabbit monoclonal antibody
<b>Host</b>	Rabbit
<b>Application</b>	WB,ICC/IF,FC,IP
<b>Reactivity</b>	Human
<b>Conjugation</b>	Unconjugated
<b>Modification</b>	Unmodified
<b>Isotype</b>	IgG
<b>Clonality</b>	Monoclonal
<b>Form</b>	Liquid
<b>Concentration</b>	
<b>Storage</b>	Aliquot and store at -20°C (valid for 12 months). Avoid freeze/thaw cycles.
<b>Shipping</b>	Ice bags
<b>Buffer</b>	Supplied in 50mM Tris-Glycine(pH 7.4), 0.15M NaCl, 40% Glycerol, 0.01% sodium azide and 0.05% protective protein. Stable for 12 months from date of receipt.
<b>Purification</b>	Affinity Purification

**Application**

<b>Dilution Ratio</b>	WB 1:1000-1:5000,ICC/IF 1:100-1:200,FC 1:50-1:200,IP 1:50-1:100
<b>Molecular Weight</b>	Calculated MW:20 kDa; Observed MW:22 kDa

**Antigen Information**

<b>Gene Name</b>	PARK7/DJ1
<b>Alternative Names</b>	DJ1; DJ-1; GATD2; HEL-S-67p
<b>Gene ID</b>	11315
<b>SwissProt ID</b>	Q99497
<b>Immunogen</b>	Recombinant protein of human PARK7

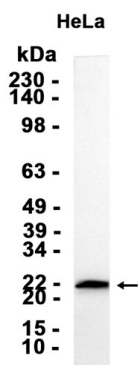
**Background**

The product of this gene belongs to the peptidase C56 family of proteins. It acts as a positive regulator of androgen receptor-dependent transcription. It may also function as a redox-sensitive chaperone, as a sensor for oxidative stress, and it apparently

protects neurons against oxidative stress and cell death. Defects in this gene are the cause of autosomal recessive early-onset Parkinson disease 7. Two transcript variants encoding the same protein have been identified for this gene. [provided by RefSeq, Jul 2008]

## Research Area

## Image Data



Western blot analysis of extracts from HeLa cells using PARK7/DJ1 Rabbit Monoclonal Antibody at 1:2000.