
Product Name: Pin1 Rabbit Monoclonal Antibody**Catalog #: AMRe87587**

For research use only.

Summary

Description	Recombinant rabbit monoclonal antibody
Host	Rabbit
Application	WB
Reactivity	Human, Mouse, Rat
Conjugation	Unconjugated
Modification	Unmodified
Isotype	IgG
Clonality	Monoclonal
Form	Liquid
Concentration	
Storage	Aliquot and store at -20°C (valid for 12 months). Avoid freeze/thaw cycles.
Shipping	Ice bags
Buffer	Supplied in 50mM Tris-Glycine(pH 7.4), 0.15M NaCl, 40% Glycerol, 0.01% sodium azide and 0.05% protective protein. Stable for 12 months from date of receipt.
Purification	Affinity Purification

Application

Dilution Ratio	WB 1:500-1:2000
Molecular Weight	Calculated MW:18 kDa; Observed MW:18 kDa

Antigen Information

Gene Name	Pin1
Alternative Names	DOD; UBL5
Gene ID	5300
SwissProt ID	Q13526
Immunogen	A synthetic peptide of human Pin1

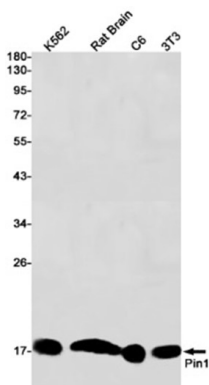
Background

Peptidyl-prolyl cis/trans isomerases (PPlases) catalyze the cis/trans isomerization of peptidyl-prolyl peptide bonds. This gene encodes one of the PPlases, which specifically binds to phosphorylated ser/thr-pro motifs to catalytically regulate the post-

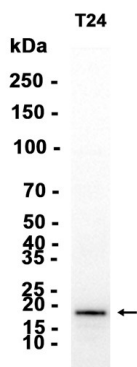
phosphorylation conformation of its substrates. The conformational regulation catalyzed by this PPlase has a profound impact on key proteins involved in the regulation of cell growth, genotoxic and other stress responses, the immune response, induction and maintenance of pluripotency, germ cell development, neuronal differentiation, and survival. This enzyme also plays a key role in the pathogenesis of Alzheimer's disease and many cancers. Multiple alternatively spliced transcript variants have been found for this gene.[provided by RefSeq, Jun 2011]

Research Area

Image Data



Western blot detection of Pin1 in K562,Rat Brain,C6,3T3 cell lysates using Pin1 antibody(1:1000 diluted).



Western blot analysis of extracts from T24 cells using AMRe87587 at 1:1000.