
Product Name: Mitofilin Rabbit Monoclonal Antibody**Catalog #: AMRe87585**

For research use only.

Summary

Description	Recombinant rabbit monoclonal antibody
Host	Rabbit
Application	WB,IHC,ICC/IF,FC
Reactivity	Human
Conjugation	Unconjugated
Modification	Unmodified
Isotype	IgG
Clonality	Monoclonal
Form	Liquid
Concentration	
Storage	Aliquot and store at -20°C (valid for 12 months). Avoid freeze/thaw cycles.
Shipping	Ice bags
Buffer	Supplied in 50mM Tris-Glycine(pH 7.4), 0.15M NaCl, 40% Glycerol, 0.01% sodium azide and 0.05% protective protein. Stable for 12 months from date of receipt.
Purification	Affinity Purification

Application

Dilution Ratio	WB 1:1000-1:5000,IHC 1:100-1:200,ICC/IF 1:100-1:500,FC 1:10-1:100
Molecular Weight	Calculated MW:84 kDa; Observed MW:84 kDa

Antigen Information

Gene Name	Mitofilin
Alternative Names	HMP; P87; P89; PIG4; Mic60; PIG52; MINOS2; P87/89
Gene ID	10989
SwissProt ID	Q16891
Immunogen	A synthetic peptide of human Mitofilin

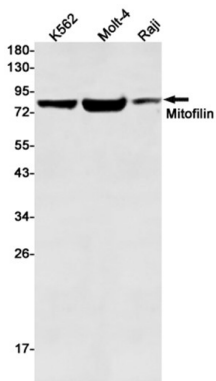
Background

Component of the MICOS complex, a large protein complex of the mitochondrial inner membrane that plays crucial roles in the maintenance of crista junctions, inner membrane architecture, and formation of contact sites to the outer membrane. Plays an

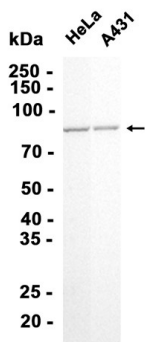
important role in the maintenance of the MICOS complex stability and the mitochondrial cristae morphology (PubMed:22114354, PubMed:25781180).

Research Area

Image Data



Western blot detection of Mitofilin in K562, Molt-4, Raji cell lysates using Mitofilin antibody (1:500 diluted).



Western blot analysis of extracts from HeLa, A431 cells using AMRe87585 at 1:3000.