

---

**Product Name: Staufen Rabbit Monoclonal Antibody****Catalog #: AMRe87584**

For research use only.

**Summary**

<b>Description</b>	Recombinant rabbit monoclonal antibody
<b>Host</b>	Rabbit
<b>Application</b>	WB,ICC/IF,FC
<b>Reactivity</b>	Human,Mouse,Rat
<b>Conjugation</b>	Unconjugated
<b>Modification</b>	Unmodified
<b>Isotype</b>	IgG
<b>Clonality</b>	Monoclonal
<b>Form</b>	Liquid
<b>Concentration</b>	
<b>Storage</b>	Aliquot and store at -20°C (valid for 12 months). Avoid freeze/thaw cycles.
<b>Shipping</b>	Ice bags
<b>Buffer</b>	Supplied in 50mM Tris-Glycine(pH 7.4), 0.15M NaCl, 40% Glycerol, 0.01% sodium azide and 0.05% protective protein. Stable for 12 months from date of receipt.
<b>Purification</b>	Affinity Purification

**Application**

<b>Dilution Ratio</b>	WB 1:1000-1:5000,ICC/IF 1:100-1:200,FC 1:20-1:50
<b>Molecular Weight</b>	Calculated MW:63 kDa; Observed MW:63 kDa

**Antigen Information**

<b>Gene Name</b>	Staufen
<b>Alternative Names</b>	STAU; PPP1R150
<b>Gene ID</b>	6780
<b>SwissProt ID</b>	O95793
<b>Immunogen</b>	A synthetic peptide of human Staufen

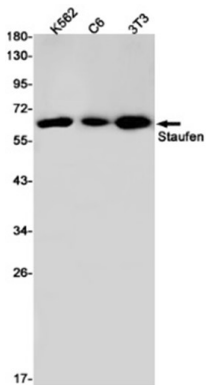
**Background**

Staufen is a member of the family of double-stranded RNA (dsRNA)-binding proteins involved in the transport and/or localization of mRNAs to different subcellular compartments and/or organelles. These proteins are characterized by the

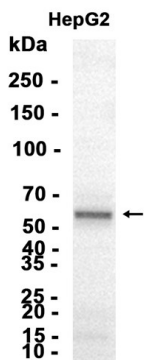
presence of multiple dsRNA-binding domains which are required to bind RNAs having double-stranded secondary structures. The human homologue of staufen encoded by STAU, in addition contains a microtubule- binding domain similar to that of microtubule-associated protein 1B, and binds tubulin. The STAU gene product has been shown to be present in the cytoplasm in association with the rough endoplasmic reticulum (RER), implicating this protein in the transport of mRNA via the microtubule network to the RER, the site of translation. Five transcript variants resulting from alternative splicing of STAU gene and encoding three isoforms have been described. Three of these variants encode the same isoform, however, differ in their 5'UTR. [provided by RefSeq, Jul 2008]

## Research Area

### Image Data



Western blot detection of Staufen in K562,C6,3T3 cell lysates using Staufen antibody(1:1000 diluted).



Western blot analysis of extracts from HepG2 cells using AMRe87584 at 1:2000.