
Product Name: CSPG4 Rabbit Monoclonal Antibody**Catalog #: AMRe87577**

For research use only.

Summary

Description	Recombinant rabbit monoclonal antibody
Host	Rabbit
Application	WB,IHC,ICC/IF,FC,IP
Reactivity	Human
Conjugation	Unconjugated
Modification	Unmodified
Isotype	IgG
Clonality	Monoclonal
Form	Liquid
Concentration	
Storage	Aliquot and store at -20°C (valid for 12 months). Avoid freeze/thaw cycles.
Shipping	Ice bags
Buffer	Supplied in 50mM Tris-Glycine(pH 7.4), 0.15M NaCl, 40% Glycerol, 0.01% sodium azide and 0.05% protective protein. Stable for 12 months from date of receipt.
Purification	Affinity Purification

Application

Dilution Ratio	WB 1:500-1:2000,IHC 1:50-1:200,ICC/IF 1:100-1:200,FC 1:200-1:500,IP 1:20-1:50
Molecular Weight	Calculated MW:251 kDa; Observed MW:251450 kDa

Antigen Information

Gene Name	CSPG4
Alternative Names	NG2; MCSP; MCSPG; MSK16; HMW-MAA; MEL-CSPG
Gene ID	1464
SwissProt ID	Q6UVK1
Immunogen	Recombinant protein of human CSPG4

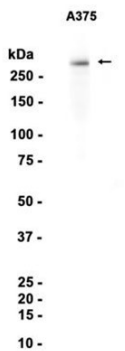
Background

A human melanoma-associated chondroitin sulfate proteoglycan plays a role in stabilizing cell-substratum interactions during early events of melanoma cell spreading on endothelial basement membranes. CSPG4 represents an integral membrane

chondroitin sulfate proteoglycan expressed by human malignant melanoma cells. [provided by RefSeq, Jul 2008]

Research Area

Image Data



Western blot analysis of extracts from A375 cells using CSPG4 Rabbit Monoclonal Antibody at 1:1000.