
Product Name: SH2B3 Rabbit Monoclonal Antibody**Catalog #: AMRe87572**

For research use only.

Summary

Description	Recombinant rabbit monoclonal antibody
Host	Rabbit
Application	WB
Reactivity	Human
Conjugation	Unconjugated
Modification	Unmodified
Isotype	IgG
Clonality	Monoclonal
Form	Liquid
Concentration	
Storage	Aliquot and store at -20°C (valid for 12 months). Avoid freeze/thaw cycles.
Shipping	Ice bags
Buffer	Supplied in 50mM Tris-Glycine(pH 7.4), 0.15M NaCl, 40% Glycerol, 0.01% sodium azide and 0.05% protective protein. Stable for 12 months from date of receipt.
Purification	Affinity Purification

Application

Dilution Ratio	WB 1:1000-1:5000
Molecular Weight	Calculated MW:63 kDa; Observed MW:63 kDa

Antigen Information

Gene Name	SH2B3
Alternative Names	LNK; IDDM20
Gene ID	10019
SwissProt ID	Q9UQQ2
Immunogen	A synthetic peptide of human SH2B3

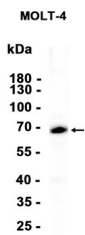
Background

This gene encodes a member of the SH2B adaptor family of proteins, which are involved in a range of signaling activities by growth factor and cytokine receptors. The encoded protein is a key negative regulator of cytokine signaling and plays a critical

role in hematopoiesis. Mutations in this gene have been associated with susceptibility to celiac disease type 13 and susceptibility to insulin-dependent diabetes mellitus. Alternatively spliced transcript variants encoding different isoforms have been found for this gene. [provided by RefSeq, Apr 2014]

Research Area

Image Data



Western blot analysis of extracts from MOLT-4 cells using SH2B3 Rabbit Monoclonal Antibody at 1:1000.