

Product Name: EZH2 Rabbit Monoclonal Antibody
Catalog #: AMRe87570



Summary

Production Name	EZH2 Rabbit Monoclonal Antibody
Description	Rabbit Monoclonal antibody
Host	Rabbit
Application	WB, IP
Reactivity	Human

Performance

Conjugation	Unconjugated
Modification	Unmodified
Isotype	IgG
Clonality	Monoclonal
Form	Liquid
Storage	Store at 4°C short term. Aliquot and store at -20°C long term. Avoid freeze/thaw cycles.
Buffer	Supplied in 50mM Tris-Glycine(pH 7.4), 0.15M NaCl, 40% Glycerol, 0.01% sodium azide and 0.05% protective protein. Stable for 12 months from date of receipt.
Purification	Affinity Purification

Immunogen

Gene Name	EZH2
Alternative Names	WVS; ENX1; KMT6; WVS2; ENX-1; EZH2b; KMT6A
Gene ID	2146
SwissProt ID	Q15910.

Application

Dilution Ratio	WB: 1:1000 IP: 1:20-1:50
Molecular Weight	Calculated MW:85 kDa; Observed MW:98 kDa

Background

This gene encodes a member of the Polycomb-group (PcG) family. PcG family members form multimeric protein

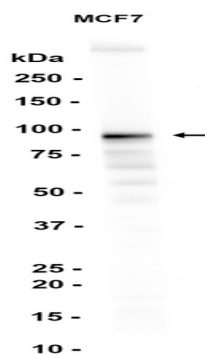
Product Name: EZH2 Rabbit Monoclonal Antibody
Catalog #: AMRe87570



complexes, which are involved in maintaining the transcriptional repressive state of genes over successive cell generations. This protein associates with the embryonic ectoderm development protein, the VAV1 oncoprotein, and the X-linked nuclear protein. This protein may play a role in the hematopoietic and central nervous systems. Multiple alternatively spliced transcript variants encoding distinct isoforms have been identified for this gene. [provided by RefSeq, Feb 2011]

Research Area

Image Data



Western blot analysis of extracts from MCF-7 cells using AMRe87570 at 1:1000.

Note

For research use only.