
Product Name: SLAMF6 Rabbit Monoclonal Antibody**Catalog #: AMRe87564**

For research use only.

Summary

Description	Recombinant rabbit monoclonal antibody
Host	Rabbit
Application	WB,ICC/IF,FC,IP
Reactivity	Human
Conjugation	Unconjugated
Modification	Unmodified
Isotype	IgG
Clonality	Monoclonal
Form	Liquid
Concentration	
Storage	Aliquot and store at -20°C (valid for 12 months). Avoid freeze/thaw cycles.
Shipping	Ice bags
Buffer	Supplied in 50mM Tris-Glycine(pH 7.4), 0.15M NaCl, 40% Glycerol, 0.01% sodium azide and 0.05% protective protein. Stable for 12 months from date of receipt.
Purification	Affinity Purification

Application

Dilution Ratio	WB 1:500-1:2000,ICC/IF 1:500-1:1000,FC 1:200-1:500,IP 1:20-1:50
Molecular Weight	Calculated MW:37 kDa; Observed MW:60 kDa

Antigen Information

Gene Name	SLAMF6
Alternative Names	KALI; NTBA; CD352; KAL1b; Ly108; NTB-A; SF2000
Gene ID	114836
SwissProt ID	Q96DU3
Immunogen	Recombinant protein of human SLAMF6

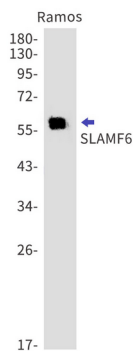
Background

The protein encoded by this gene is a type I transmembrane protein, belonging to the CD2 subfamily of the immunoglobulin superfamily. This encoded protein is expressed on Natural killer (NK), T, and B lymphocytes. It undergoes tyrosine

phosphorylation and associates with the Src homology 2 domain-containing protein (SH2D1A) as well as with SH2 domain-containing phosphatases (SHPs). It functions as a coreceptor in the process of NK cell activation. It can also mediate inhibitory signals in NK cells from X-linked lymphoproliferative patients. Alternative splicing results in multiple transcript variants encoding distinct isoforms.[provided by RefSeq, May 2010]

Research Area

Image Data



Western blot detection of SLAMF6 in Ramos cell lysates using SLAMF6 antibody(1:1000 diluted).