
Product Name: Phospho-Parvin alpha (Ser8) Rabbit Monoclonal Antibody**Catalog #: AMRe87552**

For research use only.

Summary

Description	Recombinant rabbit monoclonal antibody
Host	Rabbit
Application	WB,ICC/IF
Reactivity	Human,Mouse,Rat
Conjugation	Unconjugated
Modification	Phosphorylated
Isotype	IgG
Clonality	Monoclonal
Form	Liquid
Concentration	0.5mg/ml. The concentration of this product may be batch-dependent.
Storage	Aliquot and store at -20°C (valid for 12 months). Avoid freeze/thaw cycles.
Shipping	Ice bags
Buffer	Supplied in 50mM Tris-Glycine(pH 7.4), 0.15M NaCl, 40% Glycerol, 0.01% sodium azide and 0.05% protective protein. Stable for 12 months from date of receipt.
Purification	Affinity Purification

Application

Dilution Ratio	WB 1:1000-1:5000,ICC/IF 1:100-1:200
Molecular Weight	Calculated MW:42 kDa; Observed MW:42 kDa

Antigen Information

Gene Name	Phospho-Parvin alpha (Ser8)
Alternative Names	MXRA2; CH-ILKBP
Gene ID	55742
SwissProt ID	Q9NVD7
Immunogen	A synthetic phosphopeptide corresponding to residues surrounding Ser8 of human Parvin alpha

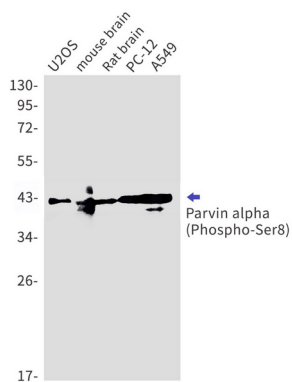
Background

This gene encodes a member of the parvin family of actin-binding proteins. Parvins are associated with focal contacts and

contain calponin homology domains that bind to actin filaments. The encoded protein is part of the integrin-linked kinase signaling complex and plays a role in cell adhesion, motility and survival. [provided by RefSeq, Dec 2010]

Research Area

Image Data



Western blot detection of Parvin alpha (Phospho-Ser8) in U2OS, mouse brain, Rat brain, PC-12, A549 cell lysates using Parvin alpha (Phospho-Ser8) antibody (1:1000 diluted).