
Product Name: Casein Kinase 1 alpha Rabbit Monoclonal Antibody**Catalog #: AMRe87542**

For research use only.

Summary

Description	Recombinant rabbit monoclonal antibody
Host	Rabbit
Application	WB
Reactivity	Human, Mouse, Rat
Conjugation	Unconjugated
Modification	Unmodified
Isotype	IgG
Clonality	Monoclonal
Form	Liquid
Concentration	
Storage	Aliquot and store at -20°C (valid for 12 months). Avoid freeze/thaw cycles.
Shipping	Ice bags
Buffer	Supplied in 50mM Tris-Glycine (pH 7.4), 0.15M NaCl, 40% Glycerol, 0.01% sodium azide and 0.05% protective protein. Stable for 12 months from date of receipt.
Purification	Affinity Purification

Application

Dilution Ratio	WB 1:500-1:2000
Molecular Weight	Calculated MW:39 kDa; Observed MW:34 kDa

Antigen Information

Gene Name	Casein Kinase 1 alpha
Alternative Names	CK1; CK1a; CKIa; HLCDGP1; PRO2975; HEL-S-77p
Gene ID	1452
SwissProt ID	P48729
Immunogen	A synthetic peptide of human Casein Kinase 1 alpha

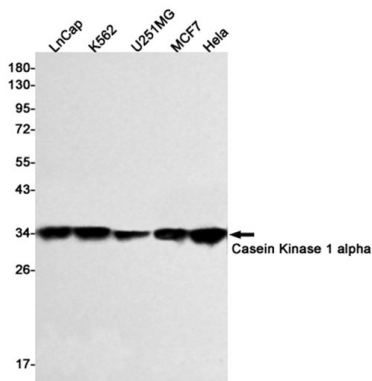
Background

Casein kinases are operationally defined by their preferential utilization of acidic proteins such as caseins as substrates. It can phosphorylate a large number of proteins. Participates in Wnt signaling. Phosphorylates CTNNB1 at 'Ser-45'. May

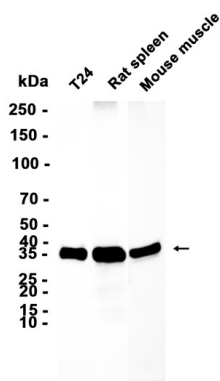
phosphorylate PER1 and PER2. May play a role in segregating chromosomes during mitosis (PubMed:11955436, PubMed:1409656, PubMed:18305108). May play a role in keratin cytoskeleton disassembly and thereby, it may regulate epithelial cell migration (PubMed:23902688).

Research Area

Image Data



Western blot detection of Casein Kinase 1 alpha in LnCap, K562, U251MG, MCF7, HeLa cell lysates using Casein Kinase 1 alpha antibody (1:500 diluted).



Western blot analysis of extracts from T24 cells and Rat spleen, Mouse muscle tissue using AMRe87542 at 1:3000.