

Product Name: ETS2 Rabbit Monoclonal Antibody**Catalog #: AMRe87532**

For research use only.

Summary

Description	Recombinant rabbit monoclonal antibody
Host	Rabbit
Application	WB,IHC,ICC/IF,IP
Reactivity	Human,Mouse,Rat
Conjugation	Unconjugated
Modification	Unmodified
Isotype	IgG
Clonality	Monoclonal
Form	Liquid
Concentration	
Storage	Aliquot and store at -20°C (valid for 12 months). Avoid freeze/thaw cycles.
Shipping	Ice bags
Buffer	Supplied in 50mM Tris-Glycine(pH 7.4), 0.15M NaCl, 40% Glycerol, 0.01% sodium azide and 0.05% protective protein. Stable for 12 months from date of receipt.
Purification	Affinity Purification

Application

Dilution Ratio	WB 1:500-1:2000,IHC 1:200-1:500,ICC/IF 1:200-1:500,IP 1:20-1:50
Molecular Weight	Calculated MW:53 kDa; Observed MW:53 kDa

Antigen Information

Gene Name	ETS2
Alternative Names	ETS2IT1
Gene ID	2114
SwissProt ID	P15036
Immunogen	Recombinant protein of human ETS2

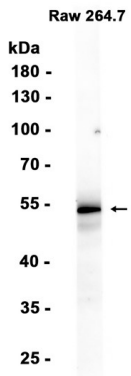
Background

This gene encodes a transcription factor which regulates genes involved in development and apoptosis. The encoded protein is also a protooncogene and shown to be involved in regulation of telomerase. A pseudogene of this gene is located on the X

chromosome. Alternative splicing results in multiple transcript variants. [provided by RefSeq, Jan 2012]

Research Area

Image Data



Western blot analysis of extracts from RAW264.7 cells using ETS2 Rabbit Monoclonal Antibody at 1:1000.