

**Product Name: Prostaglandin dehydrogenase 1 Rabbit Monoclonal Antibody****Catalog #: AMRe87529**

For research use only.

**Summary**

<b>Description</b>	Recombinant rabbit monoclonal antibody
<b>Host</b>	Rabbit
<b>Application</b>	WB,IHC,ICC/IF,FC
<b>Reactivity</b>	Human
<b>Conjugation</b>	Unconjugated
<b>Modification</b>	Unmodified
<b>Isotype</b>	IgG
<b>Clonality</b>	Monoclonal
<b>Form</b>	Liquid
<b>Concentration</b>	0.15mg/ml. The concentration of this product may be batch-dependent.
<b>Storage</b>	Aliquot and store at -20°C (valid for 12 months). Avoid freeze/thaw cycles.
<b>Shipping</b>	Ice bags
<b>Buffer</b>	Supplied in 50mM Tris-Glycine(pH 7.4), 0.15M NaCl, 40% Glycerol, 0.01% sodium azide and 0.05% protective protein. Stable for 12 months from date of receipt.
<b>Purification</b>	Affinity Purification

**Application**

<b>Dilution Ratio</b>	WB 1:1000-1:5000,IHC 1:500-1:2000,ICC/IF 1:100-1:200,FC 1:50-1:100
<b>Molecular Weight</b>	Calculated MW:29 kDa; Observed MW:25 kDa

**Antigen Information**

<b>Gene Name</b>	Prostaglandin dehydrogenase 1
<b>Alternative Names</b>	PGDH; PGDH1; PHOAR1; 15-PGDH; SDR36C1
<b>Gene ID</b>	3248
<b>SwissProt ID</b>	P15428
<b>Immunogen</b>	Recombinant protein of human Prostaglandin dehydrogenase 1

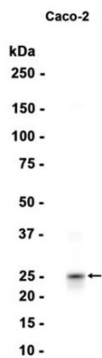
**Background**

This gene encodes a member of the short-chain nonmetalloenzyme alcohol dehydrogenase protein family. The encoded enzyme is responsible for the metabolism of prostaglandins, which function in a variety of physiologic and cellular processes

such as inflammation. Mutations in this gene result in primary autosomal recessive hypertrophic osteoarthropathy and cranioosteoarthropathy. Multiple transcript variants encoding different isoforms have been found for this gene. [provided by RefSeq, Mar 2009]

## Research Area

## Image Data



Western blot analysis of extracts from Caco-2 cells using Prostaglandin dehydrogenase 1 Rabbit Monoclonal Antibody at 1:1000.