

---

**Product Name: PP2A alpha/beta Rabbit Monoclonal Antibody****Catalog #: AMRe87528**

For research use only.

**Summary**

<b>Description</b>	Recombinant rabbit monoclonal antibody
<b>Host</b>	Rabbit
<b>Application</b>	WB,IHC,ICC/IF,FC
<b>Reactivity</b>	Human,Mouse,Rat
<b>Conjugation</b>	Unconjugated
<b>Modification</b>	Unmodified
<b>Isotype</b>	IgG
<b>Clonality</b>	Monoclonal
<b>Form</b>	Liquid
<b>Concentration</b>	
<b>Storage</b>	Aliquot and store at -20°C (valid for 12 months). Avoid freeze/thaw cycles.
<b>Shipping</b>	Ice bags
<b>Buffer</b>	Supplied in 50mM Tris-Glycine(pH 7.4), 0.15M NaCl, 40% Glycerol, 0.01% sodium azide and 0.05% protective protein. Stable for 12 months from date of receipt.
<b>Purification</b>	Affinity Purification

**Application**

<b>Dilution Ratio</b>	WB 1:1000-1:5000,IHC 1:50-1:200,ICC/IF 1:20-1:50,FC 1:50-1:100
<b>Molecular Weight</b>	Calculated MW:36 kDa; Observed MW:36 kDa

**Antigen Information**

<b>Gene Name</b>	PP2A alpha/beta
<b>Alternative Names</b>	RP-C; PP2Ac; PP2CA; PP2Calpha
<b>Gene ID</b>	5515
<b>SwissProt ID</b>	P67775
<b>Immunogen</b>	A synthetic peptide of human PP2A alpha

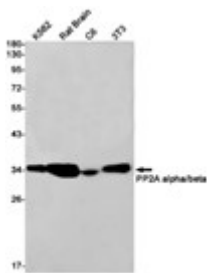
**Background**

This gene encodes the phosphatase 2A catalytic subunit. Protein phosphatase 2A is one of the four major Ser/Thr phosphatases, and it is implicated in the negative control of cell growth and division. It consists of a common heteromeric core

enzyme, which is composed of a catalytic subunit and a constant regulatory subunit, that associates with a variety of regulatory subunits. This gene encodes an alpha isoform of the catalytic subunit. [provided by RefSeq, Jul 2008]

## Research Area

## Image Data



Western blot detection of PP2A alpha/beta in K562,Rat Brain,C6,3T3 cell lysates using PP2A alpha/beta antibody(1:1000 diluted).

Western blot analysis of extracts from HepG2 , RAW264.7 cells and Rat muscle tissue using AMRe87528 at 1:1000.