

Product Name: CCN1 Rabbit Monoclonal Antibody**Catalog #: AMRe87527**

For research use only.

Summary

Description	Recombinant rabbit monoclonal antibody
Host	Rabbit
Application	WB,ICC/IF,FC,IP
Reactivity	Human
Conjugation	Unconjugated
Modification	Unmodified
Isotype	IgG
Clonality	Monoclonal
Form	Liquid
Concentration	
Storage	Aliquot and store at -20°C (valid for 12 months). Avoid freeze/thaw cycles.
Shipping	Ice bags
Buffer	Supplied in 50mM Tris-Glycine(pH 7.4), 0.15M NaCl, 40% Glycerol, 0.01% sodium azide and 0.05% protective protein. Stable for 12 months from date of receipt.
Purification	Affinity Purification

Application

Dilution Ratio	WB 1:500-1:2000,ICC/IF 1:200-1:500,FC 1:50-1:100,IP 1:20-1:50
Molecular Weight	Calculated MW:42 kDa; Observed MW:42 kDa

Antigen Information

Gene Name	CCN1
Alternative Names	GIG1; CYR61; IGFBP10
Gene ID	3491
SwissProt ID	O00622
Immunogen	Recombinant protein of human CCN1

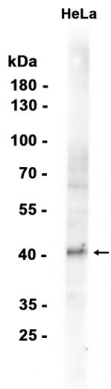
Background

The secreted protein encoded by this gene is growth factor-inducible and promotes the adhesion of endothelial cells. The encoded protein interacts with several integrins and with heparan sulfate proteoglycan. This protein also plays a role in cell

proliferation, differentiation, angiogenesis, apoptosis, and extracellular matrix formation. [provided by RefSeq, Sep 2011]

Research Area

Image Data



Western blot analysis of extracts from HeLa cells using CCN1 Rabbit Monoclonal Antibody at 1:1000.