

**Product Name: Phospho-Cyclin B1 (Ser126) Rabbit Monoclonal Antibody****Catalog #: AMRe87523**

For research use only.

**Summary**

<b>Description</b>	Recombinant rabbit monoclonal antibody
<b>Host</b>	Rabbit
<b>Application</b>	WB
<b>Reactivity</b>	Human
<b>Conjugation</b>	Unconjugated
<b>Modification</b>	Phosphorylated
<b>Isotype</b>	IgG
<b>Clonality</b>	Monoclonal
<b>Form</b>	Liquid
<b>Concentration</b>	0.5mg/ml. The concentration of this product may be batch-dependent.
<b>Storage</b>	Aliquot and store at -20°C (valid for 12 months). Avoid freeze/thaw cycles.
<b>Shipping</b>	Ice bags
<b>Buffer</b>	Supplied in 50mM Tris-Glycine(pH 7.4), 0.15M NaCl, 40% Glycerol, 0.01% sodium azide and 0.05% protective protein. Stable for 12 months from date of receipt.
<b>Purification</b>	Affinity Purification

**Application**

<b>Dilution Ratio</b>	WB 1:1000-1:5000
<b>Molecular Weight</b>	Calculated MW:48 kDa; Observed MW:55 kDa

**Antigen Information**

<b>Gene Name</b>	Phospho-Cyclin B1
<b>Alternative Names</b>	CCNB
<b>Gene ID</b>	891
<b>SwissProt ID</b>	P14635
<b>Immunogen</b>	A synthetic phosphopeptide corresponding to residues surrounding Ser126 of human Cyclin B1

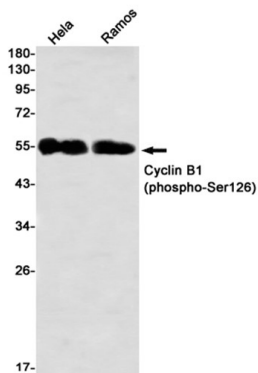
**Background**

The protein encoded by this gene is a regulatory protein involved in mitosis. The gene product complexes with p34(cdc2) to

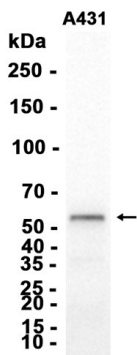
form the maturation-promoting factor (MPF). The encoded protein is necessary for proper control of the G2/M transition phase of the cell cycle. [provided by RefSeq, Aug 2017]

## Research Area

## Image Data



Western blot detection of Cyclin B1 (phospho-Ser126) in HeLa,Ramos using Cyclin B1 (phospho-Ser126) antibody(1:1000 diluted)



Western blot analysis of extracts from A431 cells using AMRe87523 at 1:1000.