
Product Name: CMTM6 Rabbit Monoclonal Antibody**Catalog #: AMRe87519**

For research use only.

Summary

Description	Recombinant rabbit monoclonal antibody
Host	Rabbit
Application	WB,IHC,FC,IP
Reactivity	Human,Mouse,Rat
Conjugation	Unconjugated
Modification	Unmodified
Isotype	IgG
Clonality	Monoclonal
Form	Liquid
Concentration	
Storage	Aliquot and store at -20°C (valid for 12 months). Avoid freeze/thaw cycles.
Shipping	Ice bags
Buffer	Supplied in 50mM Tris-Glycine(pH 7.4), 0.15M NaCl, 40% Glycerol, 0.01% sodium azide and 0.05% protective protein. Stable for 12 months from date of receipt.
Purification	Affinity Purification

Application

Dilution Ratio	WB 1:500-1:2000,IHC 1:200-1:2000,FC 1:200-1:500,IP 1:20-1:50
Molecular Weight	Calculated MW:20 kDa; Observed MW:20 kDa

Antigen Information

Gene Name	CMTM6
Alternative Names	CKLFSF6; PRO2219
Gene ID	54918
SwissProt ID	Q9NX76
Immunogen	A synthetic peptide of human CMTM6

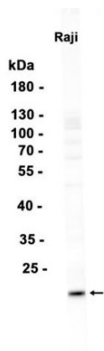
Background

This gene belongs to the chemokine-like factor gene superfamily, a novel family that is similar to the chemokine and transmembrane 4 superfamilies. This gene is one of several chemokine-like factor genes located in a cluster on chromosome 3.

This gene is widely expressed in many tissues, but the exact function of the encoded protein is unknown. [provided by RefSeq, Jul 2008]

Research Area

Image Data



Western blot analysis of extracts from Raji cells using CMTM6 Rabbit Monoclonal Antibody at 1:1000.