
Product Name: Phospho-Rsk 2/MAPKAP Kinase 1b (Ser227) Rabbit Monoclonal Antibody
Catalog #: AMRe87518

For research use only.

Summary

Description	Recombinant rabbit monoclonal antibody
Host	Rabbit
Application	WB
Reactivity	Human, Mouse, Rat
Conjugation	Unconjugated
Modification	Phosphorylated
Isotype	IgG
Clonality	Monoclonal
Form	Liquid
Concentration	0.5mg/ml. The concentration of this product may be batch-dependent.
Storage	Aliquot and store at -20°C (valid for 12 months). Avoid freeze/thaw cycles.
Shipping	Ice bags
Buffer	Supplied in 50mM Tris-Glycine(pH 7.4), 0.15M NaCl, 40% Glycerol, 0.01% sodium azide and 0.05% protective protein. Stable for 12 months from date of receipt.
Purification	Affinity Purification

Application

Dilution Ratio	WB 1:500-1:2000
Molecular Weight	Calculated MW:84 kDa; Observed MW:84 kDa

Antigen Information

Gene Name	Phospho-Rsk 2/MAPKAP Kinase 1b (Ser227)
Alternative Names	CLS; RSK; HU-3; RSK2; MRX19; ISPK-1; p90-RSK2; pp90RSK2; MAPKAP1B; S6K-alpha3
Gene ID	6197
SwissProt ID	P51812
Immunogen	A synthetic phosphopeptide corresponding to residues surrounding Ser227 of human Rsk 2/MAPKAP Kinase 1b

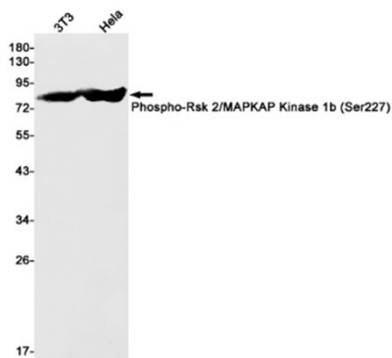
Background

This gene encodes a member of the RSK (ribosomal S6 kinase) family of serine/threonine kinases. This kinase contains 2 non-

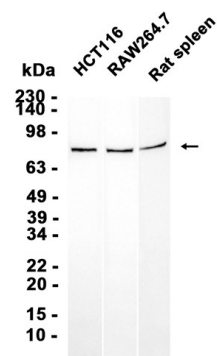
identical kinase catalytic domains and phosphorylates various substrates, including members of the mitogen-activated kinase (MAPK) signalling pathway. The activity of this protein has been implicated in controlling cell growth and differentiation. Mutations in this gene have been associated with Coffin-Lowry syndrome (CLS). [provided by RefSeq, Jul 2008]

Research Area

Image Data



Western blot detection of Phospho-Rsk 2/MAPKAP Kinase 1b (Ser227) in 3T3, HeLa cell lysates using Phospho-Rsk 2/MAPKAP Kinase 1b (Ser227) antibody (1:1000 diluted).



Western blot analysis of extracts from HCT116, RAW264.7 cells and Rat muscle tissue using AMRe87518 at 1:1000.