
Product Name: CENPE Rabbit Monoclonal Antibody**Catalog #: AMRe87510**

For research use only.

Summary

Description	Recombinant rabbit monoclonal antibody
Host	Rabbit
Application	WB
Reactivity	Human
Conjugation	Unconjugated
Modification	Unmodified
Isotype	IgG
Clonality	Monoclonal
Form	Liquid
Concentration	
Storage	Aliquot and store at -20°C (valid for 12 months). Avoid freeze/thaw cycles.
Shipping	Ice bags
Buffer	Supplied in 50mM Tris-Glycine(pH 7.4), 0.15M NaCl, 40% Glycerol, 0.01% sodium azide and 0.05% protective protein. Stable for 12 months from date of receipt.
Purification	Affinity Purification

Application

Dilution Ratio	WB 1:1000-1:5000
Molecular Weight	Calculated MW:316 kDa; Observed MW:316 kDa

Antigen Information

Gene Name	CENPE
Alternative Names	KIF10; CENP-E; MCPH13; PPP1R61
Gene ID	1062
SwissProt ID	Q02224
Immunogen	A synthetic peptide of human CENPE

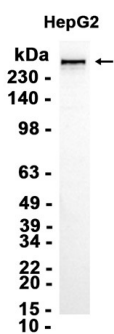
Background

Centrosome-associated protein E (CENPE) is a kinesin-like motor protein that accumulates in the G2 phase of the cell cycle. Unlike other centrosome-associated proteins, it is not present during interphase and first appears at the centromere region of

chromosomes during prometaphase. This protein is required for stable spindle microtubule capture at kinetochores which is a necessary step in chromosome alignment during prometaphase. This protein also couples chromosome position to microtubule depolymerizing activity. Alternative splicing results in multiple transcript variants encoding distinct protein isoforms. [provided by RefSeq, Nov 2014]

Research Area

Image Data



Western blot analysis of extracts from HepG2 cells using CENPE Rabbit Monoclonal Antibody at 1:1000.