
Product Name: CD24 Rabbit Monoclonal Antibody**Catalog #: AMRe87508**

For research use only.

Summary

Description	Recombinant rabbit monoclonal antibody
Host	Rabbit
Application	WB,IP
Reactivity	Human
Conjugation	Unconjugated
Modification	Unmodified
Isotype	IgG
Clonality	Monoclonal
Form	Liquid
Concentration	
Storage	Aliquot and store at -20°C (valid for 12 months). Avoid freeze/thaw cycles.
Shipping	Ice bags
Buffer	Supplied in 50mM Tris-Glycine(pH 7.4), 0.15M NaCl, 40% Glycerol, 0.01% sodium azide and 0.05% protective protein. Stable for 12 months from date of receipt.
Purification	Affinity Purification

Application

Dilution Ratio	WB 1:1000-1:5000,IP 1:10-1:100
Molecular Weight	Calculated MW:8 kDa; Observed MW:30-70 kDa

Antigen Information

Gene Name	CD24
Alternative Names	CD24A
Gene ID	100133941
SwissProt ID	P25063
Immunogen	A synthetic peptide of human CD24

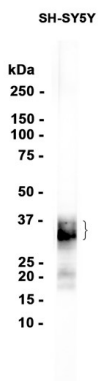
Background

This gene encodes a sialoglycoprotein that is expressed on mature granulocytes and B cells and modulates growth and differentiation signals to these cells. The precursor protein is cleaved to a short 32 amino acid mature peptide which is

anchored via a glycosyl phosphatidylinositol (GPI) link to the cell surface. This gene was missing from previous genome assemblies, but is properly located on chromosome 6. Non-transcribed pseudogenes have been designated on chromosomes 1, 15, 20, and Y. Alternative splicing results in multiple transcript variants. [provided by RefSeq, Apr 2014]

Research Area

Image Data



Western blot analysis of extracts from SH-SY5Y cells using CD24 Rabbit Monoclonal Antibody at 1:1000.