

---

**Product Name: CCR6 Rabbit Monoclonal Antibody****Catalog #: AMRe87505**

For research use only.

**Summary**

<b>Description</b>	Recombinant rabbit monoclonal antibody
<b>Host</b>	Rabbit
<b>Application</b>	WB,IHC,IP
<b>Reactivity</b>	Human
<b>Conjugation</b>	Unconjugated
<b>Modification</b>	Unmodified
<b>Isotype</b>	IgG
<b>Clonality</b>	Monoclonal
<b>Form</b>	Liquid
<b>Concentration</b>	
<b>Storage</b>	Aliquot and store at -20°C (valid for 12 months). Avoid freeze/thaw cycles.
<b>Shipping</b>	Ice bags
<b>Buffer</b>	Supplied in 50mM Tris-Glycine(pH 7.4), 0.15M NaCl, 40% Glycerol, 0.01% sodium azide and 0.05% protective protein. Stable for 12 months from date of receipt.
<b>Purification</b>	Affinity Purification

**Application**

<b>Dilution Ratio</b>	WB 1:500-1:2000,IHC 1:200-1:1000,IP 1:20-1:50
<b>Molecular Weight</b>	Calculated MW:42 kDa; Observed MW:42 kDa

**Antigen Information**

<b>Gene Name</b>	CCR6
<b>Alternative Names</b>	BN-1; DCR2; DRY6; CCR-6; CD196; CKRL3; GPR29; CKR-L3; CMKBR6; GPRCY4; STRL22; CC-CKR-6; C-C CKR-6
<b>Gene ID</b>	1235
<b>SwissProt ID</b>	P51684
<b>Immunogen</b>	A synthetic peptide of human CCR6

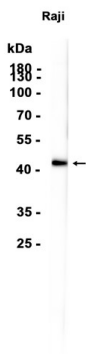
**Background**

This gene encodes a member of the beta chemokine receptor family, which is predicted to be a seven transmembrane protein

similar to G protein-coupled receptors. The gene is preferentially expressed by immature dendritic cells and memory T cells. The ligand of this receptor is macrophage inflammatory protein 3 alpha (MIP-3 alpha). This receptor has been shown to be important for B-lineage maturation and antigen-driven B-cell differentiation, and it may regulate the migration and recruitment of dendritic and T cells during inflammatory and immunological responses. Alternatively spliced transcript variants that encode the same protein have been described for this gene. [provided by RefSeq, Jul 2008]

## Research Area

## Image Data



Western blot analysis of extracts from Raji cells using CCR6 Rabbit Monoclonal Antibody at 1:1000.