

Product Name: Calmodulin Rabbit Monoclonal Antibody**Catalog #: AMRe87503**

For research use only.

Summary

Description	Recombinant rabbit monoclonal antibody
Host	Rabbit
Application	WB,IHC,FC,IP
Reactivity	Human,Mouse,Rat
Conjugation	Unconjugated
Modification	Unmodified
Isotype	IgG
Clonality	Monoclonal
Form	Liquid
Concentration	
Storage	Aliquot and store at -20°C (valid for 12 months). Avoid freeze/thaw cycles.
Shipping	Ice bags
Buffer	Supplied in 50mM Tris-Glycine(pH 7.4), 0.15M NaCl, 40% Glycerol, 0.01% sodium azide and 0.05% protective protein. Stable for 12 months from date of receipt.
Purification	Affinity Purification

Application

Dilution Ratio	WB 1:1000-1:5000,IHC 1:200-1:2000,FC 1:50-1:100,IP 1:20-1:50
Molecular Weight	Calculated MW:17 kDa; Observed MW:17 kDa

Antigen Information

Gene Name	Calmodulin
Alternative Names	caM; CAMI; PHKD; CPVT4; DD132; LQT14; CALML2
Gene ID	801
SwissProt ID	P0DP23
Immunogen	A synthetic peptide of human Calmodulin

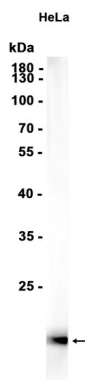
Background

This gene encodes a member of the EF-hand calcium-binding protein family. It is one of three genes which encode an identical calcium binding protein which is one of the four subunits of phosphorylase kinase. Two pseudogenes have been identified on

chromosome 7 and X. Multiple transcript variants encoding different isoforms have been found for this gene.[provided by RefSeq, Oct 2009]

Research Area

Image Data



Western blot analysis of extracts from HeLa cells using Calmodulin Rabbit Monoclonal Antibody at 1:1000.