

---

**Product Name: C4b Rabbit Monoclonal Antibody****Catalog #: AMRe87499**

For research use only.

**Summary**

<b>Description</b>	Recombinant rabbit monoclonal antibody
<b>Host</b>	Rabbit
<b>Application</b>	WB,FC
<b>Reactivity</b>	Human
<b>Conjugation</b>	Unconjugated
<b>Modification</b>	Unmodified
<b>Isotype</b>	IgG
<b>Clonality</b>	Monoclonal
<b>Form</b>	Liquid
<b>Concentration</b>	
<b>Storage</b>	Aliquot and store at -20°C (valid for 12 months). Avoid freeze/thaw cycles.
<b>Shipping</b>	Ice bags
<b>Buffer</b>	Supplied in 50mM Tris-Glycine(pH 7.4), 0.15M NaCl, 40% Glycerol, 0.01% sodium azide and 0.05% protective protein. Stable for 12 months from date of receipt.
<b>Purification</b>	Affinity Purification

**Application**

<b>Dilution Ratio</b>	WB 1:1000-1:5000,FC 1:10-1:100
<b>Molecular Weight</b>	Calculated MW:193 kDa; Observed MW:193 kDa

**Antigen Information**

<b>Gene Name</b>	C4b
<b>Alternative Names</b>	C4; RG; C4S; CO4; C4A2; C4A3; C4A4; C4A6; C4AD; CPAMD2
<b>Gene ID</b>	720
<b>SwissProt ID</b>	P0C0L4
<b>Immunogen</b>	Recombinant protein of human C4b

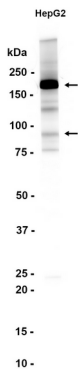
**Background**

This gene encodes the acidic form of complement factor 4, part of the classical activation pathway. The protein is expressed as a single chain precursor which is proteolytically cleaved into a trimer of alpha, beta, and gamma chains prior to secretion. The

trimer provides a surface for interaction between the antigen-antibody complex and other complement components. The alpha chain is cleaved to release C4 anaphylatoxin, an antimicrobial peptide and a mediator of local inflammation. Deficiency of this protein is associated with systemic lupus erythematosus and type I diabetes mellitus. This gene localizes to the major histocompatibility complex (MHC) class III region on chromosome 6. Varying haplotypes of this gene cluster exist, such that individuals may have 1, 2, or 3 copies of this gene. Two transcript variants encoding different isoforms have been found for this gene. [provided by RefSeq, Nov 2014]

## Research Area

## Image Data



Western blot analysis of extracts from HepG2 cells using C4b Rabbit Monoclonal Antibody at 1:1000.