

---

**Product Name: BCR Rabbit Monoclonal Antibody****Catalog #: AMRe87495**

For research use only.

**Summary**

<b>Description</b>	Recombinant rabbit monoclonal antibody
<b>Host</b>	Rabbit
<b>Application</b>	WB,IHC,FC,IP
<b>Reactivity</b>	Human,Mouse,Rat
<b>Conjugation</b>	Unconjugated
<b>Modification</b>	Unmodified
<b>Isotype</b>	IgG
<b>Clonality</b>	Monoclonal
<b>Form</b>	Liquid
<b>Concentration</b>	
<b>Storage</b>	Aliquot and store at -20°C (valid for 12 months). Avoid freeze/thaw cycles.
<b>Shipping</b>	Ice bags
<b>Buffer</b>	Supplied in 50mM Tris-Glycine(pH 7.4), 0.15M NaCl, 40% Glycerol, 0.01% sodium azide and 0.05% protective protein. Stable for 12 months from date of receipt.
<b>Purification</b>	Affinity Purification

**Application**

<b>Dilution Ratio</b>	WB 1:500-1:2000,IHC 1:200-1:500,FC 1:200-1:500,IP 1:20-1:50
<b>Molecular Weight</b>	Calculated MW:143 kDa; Observed MW:150 kDa

**Antigen Information**

<b>Gene Name</b>	BCR
<b>Alternative Names</b>	ALL; CML; PHL; BCR1; D22S11; D22S662
<b>Gene ID</b>	613
<b>SwissProt ID</b>	P11274
<b>Immunogen</b>	Recombinant protein of human BCR

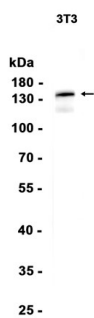
**Background**

A reciprocal translocation between chromosomes 22 and 9 produces the Philadelphia chromosome, which is often found in patients with chronic myelogenous leukemia. The chromosome 22 breakpoint for this translocation is located within the BCR

gene. The translocation produces a fusion protein which is encoded by sequence from both BCR and ABL, the gene at the chromosome 9 breakpoint. Although the BCR-ABL fusion protein has been extensively studied, the function of the normal BCR gene product is not clear. The protein has serine/threonine kinase activity and is a GTPase-activating protein for p21rac. Two transcript variants encoding different isoforms have been found for this gene. [provided by RefSeq, Jul 2008]

## Research Area

## Image Data



Western blot analysis of extracts from 3T3 cells using BCR Rabbit Monoclonal Antibody at 1:1000.