

Product Name: SNAP29 Rabbit Monoclonal Antibody**Catalog #: AMRe87483**

For research use only.

Summary

Description	Recombinant rabbit monoclonal antibody
Host	Rabbit
Application	WB,ICC/IF,FC,IP
Reactivity	Human,Mouse,Rat
Conjugation	Unconjugated
Modification	Unmodified
Isotype	IgG
Clonality	Monoclonal
Form	Liquid
Concentration	
Storage	Aliquot and store at -20°C (valid for 12 months). Avoid freeze/thaw cycles.
Shipping	Ice bags
Buffer	Supplied in 50mM Tris-Glycine(pH 7.4), 0.15M NaCl, 40% Glycerol, 0.01% sodium azide and 0.05% protective protein. Stable for 12 months from date of receipt.
Purification	Affinity Purification

Application

Dilution Ratio	WB 1:1000-1:5000,ICC/IF 1:100-1:200,FC 1:10-1:100,IP 1:20-1:50
Molecular Weight	Calculated MW:29 kDa; Observed MW:29 kDa

Antigen Information

Gene Name	SNAP29
Alternative Names	CEDNIK; SNAP-29
Gene ID	9342
SwissProt ID	O95721
Immunogen	A synthetic peptide of human SNAP29

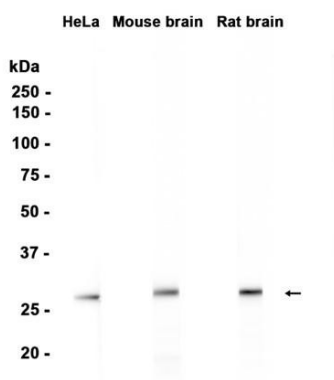
Background

This gene, a member of the SNAP25 gene family, encodes a protein involved in multiple membrane trafficking steps. Two other members of this gene family, SNAP23 and SNAP25, encode proteins that bind a syntaxin protein and mediate synaptic vesicle

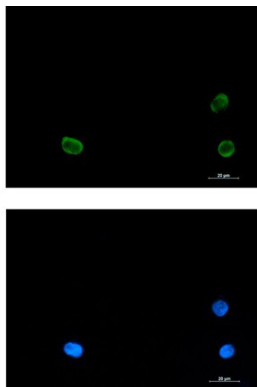
membrane docking and fusion to the plasma membrane. The protein encoded by this gene binds tightly to multiple syntaxins and is localized to intracellular membrane structures rather than to the plasma membrane. While the protein is mostly membrane-bound, a significant fraction of it is found free in the cytoplasm. Use of multiple polyadenylation sites has been noted for this gene. [provided by RefSeq, Jul 2008]

Research Area

Image Data



Western blot analysis of extracts from HeLa cells, Mouse brain and Rat brain tissues using SNAP29 Rabbit Monoclonal Antibody at 1:1000.



Immunofluorescent analysis of K562 cells using AMRe87483 antibody (green), and DAPI (blue).