

---

**Product Name: Cytokeratin 19 Rabbit Monoclonal Antibody****Catalog #: AMRe87477**

For research use only.

**Summary**

<b>Description</b>	Recombinant rabbit monoclonal antibody
<b>Host</b>	Rabbit
<b>Application</b>	WB,IHC
<b>Reactivity</b>	Mouse
<b>Conjugation</b>	Unconjugated
<b>Modification</b>	Unmodified
<b>Isotype</b>	IgG
<b>Clonality</b>	Monoclonal
<b>Form</b>	Liquid
<b>Concentration</b>	
<b>Storage</b>	Aliquot and store at -20°C (valid for 12 months). Avoid freeze/thaw cycles.
<b>Shipping</b>	Ice bags
<b>Buffer</b>	Supplied in 50mM Tris-Glycine(pH 7.4), 0.15M NaCl, 40% Glycerol, 0.01% sodium azide and 0.05% protective protein. Stable for 12 months from date of receipt.
<b>Purification</b>	Affinity Purification

**Application**

<b>Dilution Ratio</b>	WB 1:1000-1:5000,IHC 1:200-1:500
<b>Molecular Weight</b>	Calculated MW:45 kDa; Observed MW:41 kDa

**Antigen Information**

<b>Gene Name</b>	Cytokeratin 19
<b>Alternative Names</b>	K19; CK-19; EndoC; Krt1-19; AI663979; Krt-1.19
<b>Gene ID</b>	16669
<b>SwissProt ID</b>	P19001
<b>Immunogen</b>	A synthetic peptide of mouse Cytokeratin 19

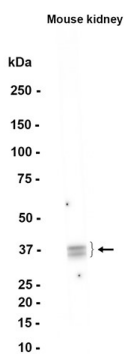
**Background**

The protein encoded by this gene is a member of the keratin family. The keratins are intermediate filament proteins responsible for the structural integrity of epithelial cells and are subdivided into cytokeratins and hair keratins. The type I cytokeratins

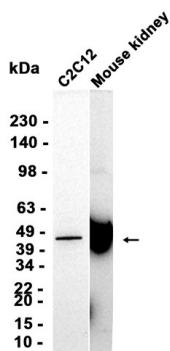
consist of acidic proteins which are arranged in pairs of heterotypic keratin chains. Unlike its related family members, this smallest known acidic cytokeratin is not paired with a basic cytokeratin in epithelial cells. It is specifically expressed in the periderm, the transiently superficial layer that envelopes the developing epidermis. Two transcript variants encoding different isoforms have been found for this gene. [provided by RefSeq, Sep 2015]

## Research Area

## Image Data



Western blot analysis of extracts from Mouse kidney tissue using Cytokeratin 19 Rabbit Monoclonal Antibody at 1:1000.



Western blot analysis of extracts from C2C12 cells and Mouse kidney tissue using AMRe87477 at 1:3000.