

Product Name: Filamin A Rabbit Monoclonal Antibody**Catalog #: AMRe87468**

For research use only.

Summary

Description	Recombinant rabbit monoclonal antibody
Host	Rabbit
Application	WB,IHC,ICC/IF,FC
Reactivity	Human,Mouse,Rat
Conjugation	Unconjugated
Modification	Unmodified
Isotype	IgG
Clonality	Monoclonal
Form	Liquid
Concentration	
Storage	Aliquot and store at -20°C (valid for 12 months). Avoid freeze/thaw cycles.
Shipping	Ice bags
Buffer	Supplied in 50mM Tris-Glycine(pH 7.4), 0.15M NaCl, 40% Glycerol, 0.01% sodium azide and 0.05% protective protein. Stable for 12 months from date of receipt.
Purification	Affinity Purification

Application

Dilution Ratio	WB 1:5000-1:50000,IHC 1:100-1:200,ICC/IF 1:100-1:200,FC 1:50-1:200
Molecular Weight	Calculated MW:281 kDa; Observed MW:281 kDa

Antigen Information

Gene Name	Filamin A
Alternative Names	FLN; FMD; MNS; OPD; ABPX; CSBS; CVD1; FLN1; NHBP; OPD1; OPD2; XLVD; XMVD; FLN-A; ABP-280
Gene ID	2316
SwissProt ID	P21333
Immunogen	A synthetic peptide of human Filamin A

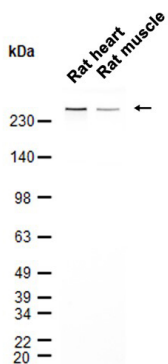
Background

The protein encoded by this gene is an actin-binding protein that crosslinks actin filaments and links actin filaments to

membrane glycoproteins. The encoded protein is involved in remodeling the cytoskeleton to effect changes in cell shape and migration. This protein interacts with integrins, transmembrane receptor complexes, and second messengers. Defects in this gene are a cause of several syndromes, including periventricular nodular heterotopias (PVNH1, PVNH4), otopalatodigital syndromes (OPD1, OPD2), frontometaphyseal dysplasia (FMD), Melnick-Needles syndrome (MNS), and X-linked congenital idiopathic intestinal pseudoobstruction (CIIPX). Two transcript variants encoding different isoforms have been found for this gene.[provided by RefSeq, Mar 2009]

Research Area

Image Data



Western blot analysis of extracts from Rat heart, Rat muscle tissue using Filamin A Rabbit Monoclonal Antibody at 1:5000.