

---

**Product Name: CSHL1 Rabbit Monoclonal Antibody****Catalog #: AMRe87463**

For research use only.

**Summary**

<b>Description</b>	Recombinant rabbit monoclonal antibody
<b>Host</b>	Rabbit
<b>Application</b>	WB,IHC
<b>Reactivity</b>	Human
<b>Conjugation</b>	Unconjugated
<b>Modification</b>	Unmodified
<b>Isotype</b>	IgG
<b>Clonality</b>	Monoclonal
<b>Form</b>	Liquid
<b>Concentration</b>	
<b>Storage</b>	Aliquot and store at -20°C (valid for 12 months). Avoid freeze/thaw cycles.
<b>Shipping</b>	Ice bags
<b>Buffer</b>	Supplied in 50mM Tris-Glycine(pH 7.4), 0.15M NaCl, 40% Glycerol, 0.01% sodium azide and 0.05% protective protein. Stable for 12 months from date of receipt.
<b>Purification</b>	Affinity Purification

**Application**

<b>Dilution Ratio</b>	WB 1:2000-1:20000,IHC 1:200-1:500
<b>Molecular Weight</b>	Calculated MW:25 kDa; Observed MW:25 kDa

**Antigen Information**

<b>Gene Name</b>	CSHL1
<b>Alternative Names</b>	CSL; CS-5; GHB4; CSHP1; hCS-L
<b>Gene ID</b>	1444
<b>SwissProt ID</b>	Q14406
<b>Immunogen</b>	Recombinant protein of human CSHL1

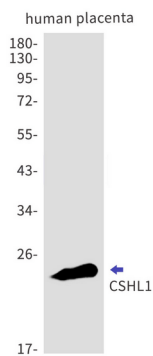
**Background**

The protein encoded by this gene is a member of the somatotropin/prolactin family of hormones which play an important role in growth control. The gene, along with four other related genes, is located at the growth hormone locus on chromosome 17

where they are interspersed in the same transcriptional orientation; an arrangement which is thought to have evolved by a series of gene duplications. Although the five genes share a remarkably high degree of sequence identity, they are expressed selectively in different tissues. This particular family member is expressed in placental villi, although it was originally thought to be a pseudogene. In fact, alternative splicing suggests that the majority of the transcripts would be unable to express a secreted protein. Alternatively spliced transcript variants encoding different isoforms have been identified. [provided by RefSeq, Jul 2008]

## Research Area

## Image Data



Western blot detection of CSHL1 in human placenta cell lysates using CSHL1 antibody(1:1000 diluted).