

---

**Product Name: Lipin 1 Rabbit Monoclonal Antibody****Catalog #: AMRe87455**

For research use only.

**Summary**

<b>Description</b>	Recombinant rabbit monoclonal antibody
<b>Host</b>	Rabbit
<b>Application</b>	WB,IHC,ICC/IF,FC,IP
<b>Reactivity</b>	Human
<b>Conjugation</b>	Unconjugated
<b>Modification</b>	Unmodified
<b>Isotype</b>	IgG
<b>Clonality</b>	Monoclonal
<b>Form</b>	Liquid
<b>Concentration</b>	
<b>Storage</b>	Aliquot and store at -20°C (valid for 12 months). Avoid freeze/thaw cycles.
<b>Shipping</b>	Ice bags
<b>Buffer</b>	Supplied in 50mM Tris-Glycine(pH 7.4), 0.15M NaCl, 40% Glycerol, 0.01% sodium azide and 0.05% protective protein. Stable for 12 months from date of receipt.
<b>Purification</b>	Affinity Purification

**Application**

<b>Dilution Ratio</b>	WB 1:1000-1:5000,IHC 1:50-1:100,ICC/IF 1:100-1:200,FC 1:10-1:100,IP 1:10-1:100
<b>Molecular Weight</b>	Calculated MW:99 kDa; Observed MW:130 kDa

**Antigen Information**

<b>Gene Name</b>	Lipin 1
<b>Alternative Names</b>	PAP1
<b>Gene ID</b>	23175
<b>SwissProt ID</b>	Q14693
<b>Immunogen</b>	A synthetic peptide of human Lipin 1

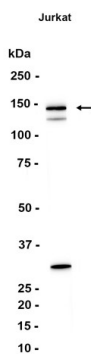
**Background**

This gene encodes a magnesium-ion-dependent phosphatidic acid phosphohydrolase enzyme that catalyzes the penultimate step in triglyceride synthesis including the dephosphorylation of phosphatidic acid to yield diacylglycerol. Expression of this

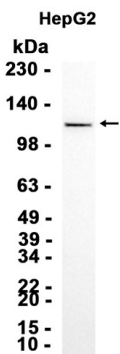
gene is required for adipocyte differentiation and it also functions as a nuclear transcriptional coactivator with some peroxisome proliferator-activated receptors to modulate expression of other genes involved in lipid metabolism. Mutations in this gene are associated with metabolic syndrome, type 2 diabetes, acute recurrent rhabdomyolysis, and autosomal recessive acute recurrent myoglobinuria (ARARM). This gene is also a candidate for several human lipodystrophy syndromes. [provided by RefSeq, Mar 2017]

## Research Area

## Image Data



Western blot analysis of extracts from Jurkat cells using Lipin 1 Rabbit Monoclonal Antibody at 1:1000.



Western blot analysis of extracts from HepG2 cells using AMRe87455 at 1:3000.