
Product Name: CBX4 Rabbit Monoclonal Antibody**Catalog #: AMRe87444**

For research use only.

Summary

Description	Recombinant rabbit monoclonal antibody
Host	Rabbit
Application	WB,IHC,FC,IP
Reactivity	Human,Mouse,Rat
Conjugation	Unconjugated
Modification	Unmodified
Isotype	IgG
Clonality	Monoclonal
Form	Liquid
Concentration	
Storage	Aliquot and store at -20°C (valid for 12 months). Avoid freeze/thaw cycles.
Shipping	Ice bags
Buffer	Supplied in 50mM Tris-Glycine(pH 7.4), 0.15M NaCl, 40% Glycerol, 0.01% sodium azide and 0.05% protective protein. Stable for 12 months from date of receipt.
Purification	Affinity Purification

Application

Dilution Ratio	WB 1:500-1:2000,IHC 1:100-1:200,FC 1:200-1:500,IP 1:20-1:50
Molecular Weight	Calculated MW:61 kDa; Observed MW:61 kDa

Antigen Information

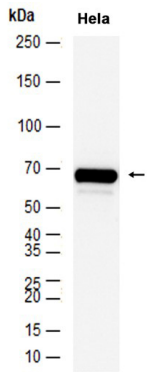
Gene Name	CBX4
Alternative Names	PC2; NBP16
Gene ID	8535
SwissProt ID	O00257
Immunogen	A synthetic peptide of human CBX4

Background

E3 SUMO-protein ligase which facilitates SUMO1 conjugation by UBE2I (PubMed:12679040)

Research Area

Image Data



Western blot analysis of extracts from HeLa cells using CBX4 Rabbit Monoclonal Antibody at 1:1000.