

---

**Product Name: ATF2 Rabbit Monoclonal Antibody****Catalog #: AMRe87441**

For research use only.

**Summary**

<b>Description</b>	Recombinant rabbit monoclonal antibody
<b>Host</b>	Rabbit
<b>Application</b>	WB,IHC,IP
<b>Reactivity</b>	Human
<b>Conjugation</b>	Unconjugated
<b>Modification</b>	Unmodified
<b>Isotype</b>	IgG
<b>Clonality</b>	Monoclonal
<b>Form</b>	Liquid
<b>Concentration</b>	
<b>Storage</b>	Aliquot and store at -20°C (valid for 12 months). Avoid freeze/thaw cycles.
<b>Shipping</b>	Ice bags
<b>Buffer</b>	Supplied in 50mM Tris-Glycine(pH 7.4), 0.15M NaCl, 40% Glycerol, 0.01% sodium azide and 0.05% protective protein. Stable for 12 months from date of receipt.
<b>Purification</b>	Affinity Purification

**Application**

<b>Dilution Ratio</b>	WB 1:1000-1:5000,IHC 1:50-1:200,IP 1:20-1:50
<b>Molecular Weight</b>	Calculated MW:55 kDa; Observed MW:70 kDa

**Antigen Information**

<b>Gene Name</b>	ATF2
<b>Alternative Names</b>	HB16; CREB2; TREB7; CREB-2; CRE-BP1
<b>Gene ID</b>	1386
<b>SwissProt ID</b>	P15336
<b>Immunogen</b>	A synthetic peptide of human ATF2

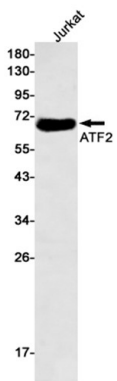
**Background**

This gene encodes a transcription factor that is a member of the leucine zipper family of DNA binding proteins. The encoded protein has been identified as a moonlighting protein based on its ability to perform mechanistically distinct functions This

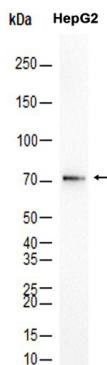
protein binds to the cAMP-responsive element (CRE), an octameric palindrome. It forms a homodimer or a heterodimer with c-Jun and stimulates CRE-dependent transcription. This protein is also a histone acetyltransferase (HAT) that specifically acetylates histones H2B and H4 in vitro; thus it may represent a class of sequence-specific factors that activate transcription by direct effects on chromatin components. The encoded protein may also be involved in cell's DNA damage response independent of its role in transcriptional regulation. Several alternatively spliced transcript variants have been found for this gene [provided by RefSeq, Jan 2014]

## Research Area

## Image Data



Western blot detection of ATF2 in Jurkat cell lysates using ATF2 antibody(1:500 diluted).



Western blot analysis of extracts from HepG2 cells using AMRe87441 at 1:2000.