
Product Name: TPP1 Rabbit Monoclonal Antibody**Catalog #: AMRe87440**

For research use only.

Summary

Description	Recombinant rabbit monoclonal antibody
Host	Rabbit
Application	WB,IHC
Reactivity	Human,Mouse,Rat
Conjugation	Unconjugated
Modification	Unmodified
Isotype	IgG
Clonality	Monoclonal
Form	Liquid
Concentration	
Storage	Aliquot and store at -20°C (valid for 12 months). Avoid freeze/thaw cycles.
Shipping	Ice bags
Buffer	Supplied in 50mM Tris-Glycine(pH 7.4), 0.15M NaCl, 40% Glycerol, 0.01% sodium azide and 0.05% protective protein. Stable for 12 months from date of receipt.
Purification	Affinity Purification

Application

Dilution Ratio	WB 1:1000-1:5000,IHC 1:50-1:100
Molecular Weight	Calculated MW:61,35 kDa; Observed MW:61,48 kDa

Antigen Information

Gene Name	TPP1
Alternative Names	CLN2; GIG1; LPIC; SCAR7; TPP-1
Gene ID	1200
SwissProt ID	O14773
Immunogen	Recombinant protein of human TPP1

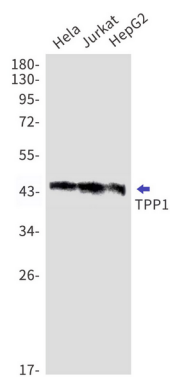
Background

This gene encodes a member of the sedolisin family of serine proteases. The protease functions in the lysosome to cleave N-terminal tripeptides from substrates, and has weaker endopeptidase activity. It is synthesized as a catalytically-inactive enzyme

which is activated and auto-proteolyzed upon acidification. Mutations in this gene result in late-infantile neuronal ceroid lipofuscinosis, which is associated with the failure to degrade specific neuropeptides and a subunit of ATP synthase in the lysosome. [provided by RefSeq, Jul 2008]

Research Area

Image Data



Western blot detection of TPP1 in HeLa, Jurkat, HepG2 cell lysates using TPP1 antibody (1:1000 diluted).