

---

**Product Name: Phospho-Chk1 (Ser280) Rabbit Monoclonal Antibody****Catalog #: AMRe87433**

For research use only.

**Summary**

<b>Description</b>	Recombinant rabbit monoclonal antibody
<b>Host</b>	Rabbit
<b>Application</b>	WB
<b>Reactivity</b>	Human
<b>Conjugation</b>	Unconjugated
<b>Modification</b>	Phosphorylated
<b>Isotype</b>	IgG
<b>Clonality</b>	Monoclonal
<b>Form</b>	Liquid
<b>Concentration</b>	0.5mg/ml. The concentration of this product may be batch-dependent.
<b>Storage</b>	Aliquot and store at -20°C (valid for 12 months). Avoid freeze/thaw cycles.
<b>Shipping</b>	Ice bags
<b>Buffer</b>	Supplied in 50mM Tris-Glycine(pH 7.4), 0.15M NaCl, 40% Glycerol, 0.01% sodium azide and 0.05% protective protein. Stable for 12 months from date of receipt.
<b>Purification</b>	Affinity Purification

**Application**

<b>Dilution Ratio</b>	WB 1:1000-1:5000
<b>Molecular Weight</b>	Calculated MW:54 kDa; Observed MW:54 kDa

**Antigen Information**

<b>Gene Name</b>	Phospho-Chk1
<b>Alternative Names</b>	CHK1
<b>Gene ID</b>	1111
<b>SwissProt ID</b>	O14757
<b>Immunogen</b>	A synthetic phosphopeptide corresponding to residues surrounding Ser280 of human Chk1

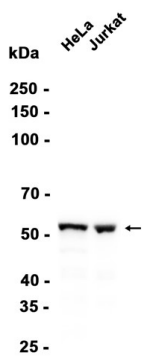
**Background**

The protein encoded by this gene belongs to the Ser/Thr protein kinase family. It is required for checkpoint mediated cell cycle arrest in response to DNA damage or the presence of unreplicated DNA. This protein acts to integrate signals from ATM and

ATR, two cell cycle proteins involved in DNA damage responses, that also associate with chromatin in meiotic prophase I. Phosphorylation of CDC25A protein phosphatase by this protein is required for cells to delay cell cycle progression in response to double-strand DNA breaks. Several alternatively spliced transcript variants have been found for this gene. [provided by RefSeq, Oct 2011]

## Research Area

## Image Data



Western blot analysis of extracts from HeLa, Jurkat cells using Phospho-Chk1 (Ser280) Rabbit Monoclonal Antibody at 1:1000.